

OPTICAL TABLES, BREADBOARDS, RAILS & CARRIERS



INTRODUCTION

Welcome to our 2020 - 2021 edition of Product Catalog. We would like to thank you for your continue support and encouragement. Throughout this challenging time, we have grown and transform our business to be more efficient and effective. This will enable us to offer better service and more competitive pricing to our customers.

Our new edition of catalog comes with a easy reference features where we categorized the products into different usage categories, i.e. Advanced Material, Renewable Energy, Bio-Process, Gauge Calibration, Membrane Technology, 3D scanner and others. This will facilitate the users to quickly access to the equipment specification required, and options available to them in term of measuring range or equipment complexity.

In our new catalog, we have also added the equipment to do research in renewable energy like solar cell, fuel cell, flow cell, lithium ion batteries, and membrane technologies. In synergy with our advanced material equipment, we have also added the equipment for material characterization especially in the area of rare earth research and magnetic properties. In line with the manufacturing industry footsteps, the equipment on 3D scanning and 3D printing also have been added in to expand the tools in the research and development for industry 4.0.

To our current customers, we believed our partnership will be strengthen for the years to come. The new catalog will also create new opportunities to build new relationship with new customers.

Lastly, I would like to thanks our staffs for their dedication and sacrifice in supporting the management for a brighter future.

Patrick Tan
Director
KGC (Group of Companies)

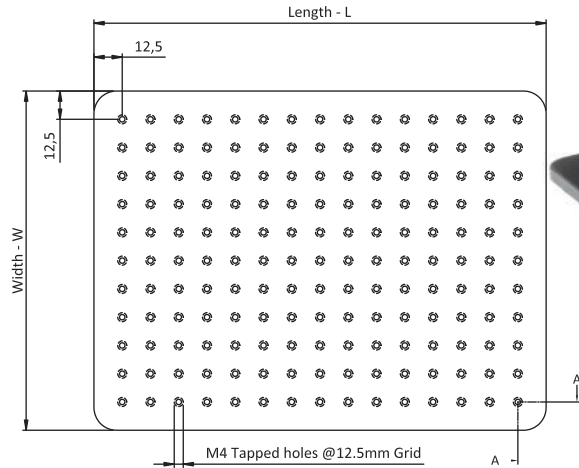
Contents

SOLID BREADBOARDS	
Mini Breadboards - MBB series	002
Standard Solid Breadboards	003
Heavy Duty Breadboards	004
MOUNTING ACCESSORIES (Breadboards)	
Angle brackets	005
ENCLOSURES	
Faraday cage	006
Mettalic Enclosures	007
Transparent Enclosures	008
Small size Transparent Enclosures	009
Black Enclosures	009
Enclosure Construction System	010
OVERHEAD SHELF SYSTEMS	011
SHELF SYSTEMS	
Overhead Shelves-standing type	011
Additional shelves	012
Bottom shel	012
Storage systems	012
Storage box unit with 8 storage boxes	012
Quick access tool Organizer (pegboard)	012
Quick access tool Organizer	012
Electrical Power Strips	012
Monitor Mounting Arm	013
Cable Routing Clips (Cable holder)	013
Led Lightings	013
L-Clamp	013
HONEYCOMB BREADBOARDS	
Extreme Light weight breadboards	014
Optical Lab Worktable	014
Honeycomb Breadboards (lightweight)	015
Honeycomb Breadboards (Standard)	015
CUSTOM OPTICAL BREADBOARDS AND SUPPORTS	
Honeycomb Tabletops	017
TABLETOP SUPPORTS	
Rigid table top support (RTS series)	018
Passive Vibration Isolation System	018
Independent Legs PVISA series	018
Passive Vibration Isolation System	019
Interconnected legs PVISI series	019
Active Vibration Isolation Systems & Supports	020
Desktop Vibration Isolation support	021
LAB JACK	
Manual Lab Jack- LJ Series	022
Motorised Lab Jack MLJ Series	023
Heavy Duty Lab Jack-	024
Motorized Heavy Duty Lab Jack	024
Vaccum Compatible Lab Jacks	025
Controller for Motorized Lab Jack	025
RAILS, CARRIERS AND ACCESSORIES	
Rail with Dovetail Design	026
Dovetail Design	026
Carrier for Rail with Dovetail Design	026
HC-1 Rails	027
Carrier for HC-1 Rails	027
HC-2 Rails	028
Carrier for HC-2 Rails	028
HC-3 Rails	029
Carrier for HC-3 Rails	029

SOLID BREADBOARDS

Mini Breadboards - MBB series

Mini breadboards are used mainly to construct small optical experimental setups. The thickness of mini breadboard is 5mm. There are M4 tapped holes on 12.5mm grid. These breadboards are also available in vacuum compatible version.



MBB-AL ALUMINIUM MINI BREADBOARD

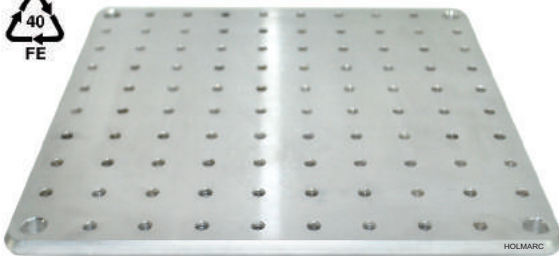


- ▶ 5mm thick
- ▶ M4 Standard tapped holes on 12.5mm Grid
- ▶ Aluminium or stainless steel construction
- ▶ Anodized finish for aluminium
- ▶ Satin finish for Stainless Steel
- ▶ Machining tolerance +/- 0.3 mm over 300 mm length
- ▶ Surface flatness +/- 0.15mm over 300 mm square area

On request tapped holes other than M4 can be provided on any array.

Custom product configurations

- Breadboard with custom hole pattern
- Custom mounting accessories
- Breadboard with custom profiles



MBB-SS STAINLESS STEEL MINI BREADBOARD

Make your Choice !!!

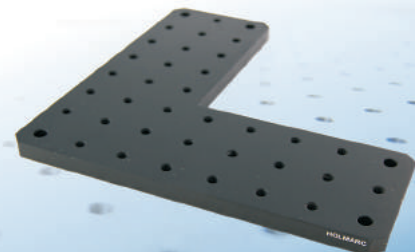
These MBB series breadboards are available in various shapes, sizes and with different patterns of tapped holes other than standard models.

Please send us yours design or contact us at mail@holmarc.com Or sales@holmarc.com

ALUMINIUM		STAINLESS STEEL		DIMENSIONS		MOUNTING
Model No:	Model No:	L (mm)	W (mm)	Mounting Hole		
MBB-75100-AL	MBB-75100-SS	100	75	M4		
MBB-75150-AL	MBB-75150-SS	150	75	M4		
MBB-75200-AL	MBB-75200-SS	200	75	M4		
MBB-75250-AL	MBB-75250-SS	250	75	M4		
MBB-100100-AL	MBB-100100-SS	100	100	M4		
MBB-100150-AL	MBB-100150-SS	150	100	M4		
MBB-100200-AL	MBB-100200-SS	200	100	M4		
MBB-100250-AL	MBB-100250-SS	250	100	M4		
MBB-150150-AL	MBB-150150-SS	150	150	M4		
MBB-150200-AL	MBB-150200-SS	200	150	M4		
MBB-150250-AL	MBB-150250-SS	250	150	M4		
MBB-200200-AL	MBB-200200-SS	200	200	M4		
MBB-200250-AL	MBB-200250-SS	250	200	M4		
MBB-250250-AL	MBB-250250-SS	250	250	M4		



MBB-AL CUSTOM PATTERNS



Standard Solid Breadboards

BB
SERIES



Fig. BB-AL ALUMINIUM BREADBOARD

Standard breadboards are commonly used platforms for building optical setups. The thickness is 10mm. There are M6 tapped holes on 25mm grid. These breadboards are also available in vacuum compatible versions.

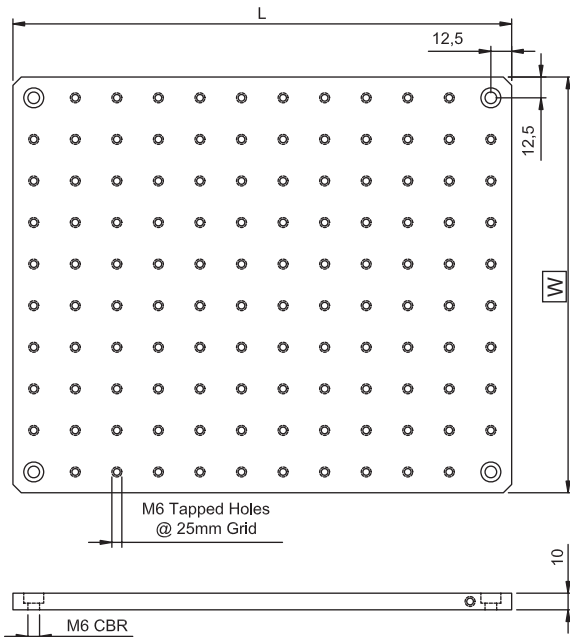
On request, tapped holes other than M6 can be provided on any array.



CUSTOM
CONFIGURABLE

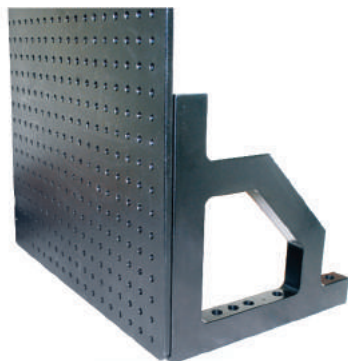


- ▶ 10mm thick
- ▶ M6 Standard tapped holes on 25mm Grid
- ▶ Aluminium construction
- ▶ Black anodized finish for aluminium
- ▶ Machining tolerance +/- 0.3 mm over 300 mm length
- ▶ Surface flatness +/- 0.15mm over 300 mm square area



Model No:	L (mm)	W (mm)	ALUMINIUM BLACK ANODISED FINISH	
			T (mm)	Mounting Hole
BB-100100-AL	100	100	10	M6
BB-100150-AL	150	100	10	M6
BB-100200-AL	200	100	10	M6
BB-100250-AL	250	100	10	M6
BB-100300-AL	300	100	10	M6
BB-100400-AL	400	100	10	M6
BB-150150-AL	150	150	10	M6
BB-150200-AL	200	150	10	M6
BB-150250-AL	250	150	10	M6
BB-150300-AL	300	150	10	M6
BB-150400-AL	400	150	10	M6
BB-200200-AL	200	200	10	M6
BB-200250-AL	250	200	10	M6
BB-200300-AL	300	200	10	M6
BB-200400-AL	400	200	10	M6
BB-250250-AL	250	250	10	M6
BB-250300-AL	300	250	10	M6
BB-250400-AL	400	250	10	M6
BB-300300-AL	300	300	10	M6
BB-300400-AL	400	300	10	M6
BB-400400-AL	400	400	10	M6

Breadboard Vertical Mounting Accessories



<< 90° Bracket

90° Bracket is designed to mount aluminium breadboard perpendicular to optical table to achieve vertical working surface.

FOR MORE DETAILS Refer Page 05

Custom product configurations

- Breadboard with custom hole pattern
- Custom mounting accessories
- Breadboard with custom profiles





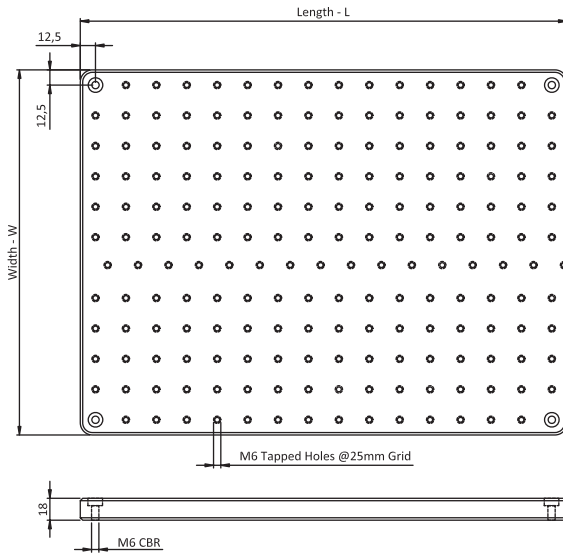
Heavy Duty Breadboards

Heavy duty breadboards are available in 18mm thickness. These breadboards are heavy and can be used for building rigid setups.



Fig. **HBB-AL** ALUMINIUM HEAVY DUTY BREADBOARD

- ▶ 18mm thick
- ▶ M6 standard tapped holes on 25mm grid
- ▶ Aluminium alloy construction
- ▶ Black anodized finish for aluminium alloy
- ▶ Machining tolerance +/- 0.3 mm over 300 mm length
- ▶ Surface flatness +/- 0.15mm over 300 mm square area



Angle Brackets

FOR MORE DETAILS Refer Page **05**

Designed to mount aluminium breadboard to optical table for achieving vertical or angled working surface.

- Rigid, angled mounting brackets
- 45° and 90° angle brackets

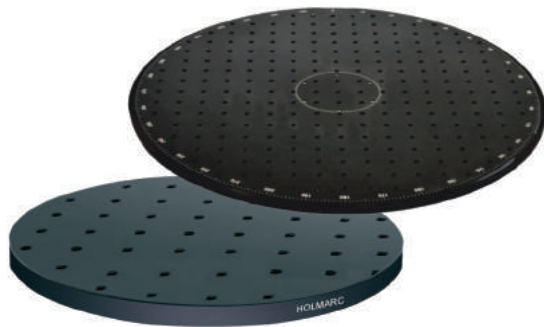


Custom product configurations

- Breadboard with custom hole pattern
- Custom mounting accessories
- Breadboard with custom profiles

Make your Choice !!!

HBB series breadboards are available in various shapes, sizes and with custom patterns of tapped holes and marking.



Model No:	L (mm)	B (mm)	ALUMINIUM BLACK ANODIZED FINISH	
			T (mm)	Mounting Hole
HBB-250250-AL	250	250	18	M6
HBB-250300-AL	300	250	18	M6
HBB-250350-AL	350	250	18	M6
HBB-250400-AL	400	250	18	M6
HBB-250450-AL	450	250	18	M6
HBB-250500-AL	500	250	18	M6
HBB-300300-AL	300	300	18	M6
HBB-300350-AL	350	300	18	M6
HBB-300400-AL	400	300	18	M6
HBB-300450-AL	450	300	18	M6
HBB-300500-AL	500	300	18	M6
HBB-350350-AL	350	350	18	M6
HBB-350400-AL	400	350	18	M6
HBB-350450-AL	450	350	18	M6
HBB-350500-AL	500	350	18	M6
HBB-400400-AL	400	400	18	M6
HBB-400450-AL	450	400	18	M6
HBB-400500-AL	500	400	18	M6
HBB-450450-AL	450	450	18	M6
HBB-450500-AL	500	450	18	M6
HBB-500500-AL	500	500	18	M6



ENCLOSURES



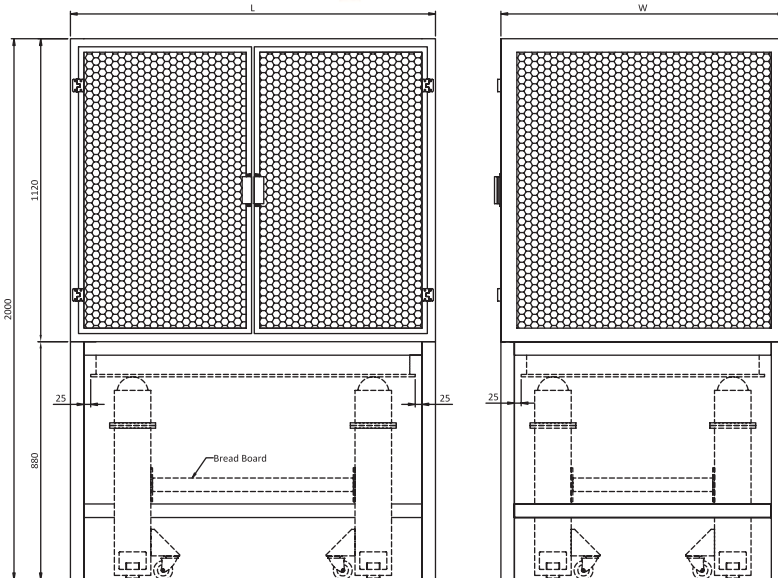
Faraday Cage

Holmarc's benchtop faraday cage incorporates detachable aluminium frame and copper mesh to shield electromagnetic interference. Magnetic closures and large access doors or detachable front panel used in our models provide much convenient access.

These are compatible with all HOLMARC make standard breadboards / tabletops and fits directly without modifications / changes.

Specifications

Frame material.....	Aluminium
Mesh material.....	Copper
Copper mesh visibility.....	30 %
Copper mesh wire dia.....	0.254 mm
Side panel fixing method.....	Screwable side panel
Number of cable ports with endcaps.....	2 Nos.
Door.....	Front door or screwable panel



Model No:	Size (L x B x H) mm	Type
FRC-60-60-HD	600 x 600 x 600	Enclosure with hinged front door & detachable side panels
FRC-60-60-DT		Enclosure with detachable panels on all sides
FRC-90-60-HD	900 x 600 x 750	Enclosure with hinged front door & detachable side panels (900 mm side)
FRC-90-60-DT		Enclosure with detachable panels on all sides
FRC-90-90-HD	900 x 900 x 900	Enclosure with hinged front door & detachable side panels
FRC-90-90-DT		Enclosure with detachable panels on all sides
FRC-120-90-HD	1200 x 900 x 900	Enclosure with hinged front door & detachable side panels
FRC-120-90-DT		Enclosure with detachable panels on all sides
FRC-120-120-HD	1200 x 1200 x 900	Enclosure with hinged front door & detachable side panels
FRC-120-120-DT		Enclosure with detachable panels on all sides
FRC-180-120-HD	1800 x 1200 x 900	Enclosure with hinged front door & detachable side panels
FRC-180-120-DT		Enclosure with detachable panels on all sides

Metallic Enclosures

Holmarc's Metallic Enclosure consists of aluminium panels and aluminium extrusion frame with black powder coating. There are two options for front door - hinged or sliding. Two cable ports with endcaps are provided on the back side of the enclosure. Power outputs and roof LED light with on / off switches can be integrated with the enclosure, if specified at the time of ordering.

- ▶ LED cabin lighting
- ▶ Options for front door : hinged / sliding

Specifications

Frame material.....	Aluminium
Panels.....	2 mm thick aluminium
Visibility.....	0 %
Side panel fixing method.....	Tightened by rubber beading inside frame slots
Number of cable ports with endcaps	2 Nos.
Front door.....	Hinged or sliding
Finish.....	Black powder coated



www.holmarc.com
http://www.holmarc.com/metallic_enclosures.php



Model No:	Size (L x B x H) mm	Type
MTE-60-60-HD	600 x 600 x 600	Enclosure with hinged front door
MTE-60-60-SLD		Enclosure with sliding front door
MTE-90-60-HD	900 x 600 x 750	Enclosure with hinged front door (longer side)
MTE-90-60-SLD		Enclosure with sliding front door (longer side)
MTE-90-90-HD	900 x 900 x 900	Enclosure with hinged front door
MTE-90-90-SLD		Enclosure with sliding front door
MTE-120-90-HD	1200 x 900 x 900	Enclosure with hinged front door (longer side)
MTE-120-90-SLD		Enclosure with sliding front door (longer side)
MTE-120-120-HD	1200 x 1200 x 900	Enclosure with hinged front door
MTE-120-120-SLD		Enclosure with sliding front door
MTE-180-120-HD	1800 x 1200 x 900	Enclosure with hinged front door (longer side)
MTE-180-120-SLD		Enclosure with sliding front door (longer side)

Accessories

(LED Light and Power Socket)

Model No:	Size (L x B x H) mm
PS-15A-1	15A power socket with switch : 1 No
PS-15A-2	15A power socket with switches : 2 Nos.
PS-15A-3	15A power socket with switches : 3 Nos.
LED-RF-1	Roof LED with Switch : 1 No
LED-RF-2	Roof LED with Switches : 2 Nos.

Need a custom enclosure?
Working on a new project ?
We're here to help you.

Common choices include Steel, Aluminium and Acrylic.



Transparent Enclosures

Holmarc's Transparent Enclosure consists of acrylic panels and machined aluminium frame. Front door is available with two options : hinged door or sliding door. Enclosure frame has black powder coated finish. Back side of the enclosure has two cable ports with end caps. Mounting clamps are provided for fixing the enclosure with breadboard. Power outputs and roof LED light with on / off switches are integrated with enclosure, if specified with the model by the customer.

- ▶ Easy integration with the standard breadboards / tabletops
- ▶ Options for front door : hinged / sliding

Specifications

Frame material.....	Aluminium
Panels.....	3 - 12 mm thick acrylic
Visibility.....	95 %
Side panel fixing method.....	Tightened by rubber beading inside frame slots
Number of cable ports with endcaps	2 Nos.
Front door.....	Hinged or sliding
Finish.....	Black powder coated



www.holmarc.com
http://www.holmarc.com/transparent_enclosures.php



Model No:	Size (L x B x H) mm	Type
TE-60-60-HD	600 x 600 x 600	Enclosure with hinged front door
TE-60-60-SLD	600 x 600 x 600	Enclosure with sliding front door
TE-90-60-HD	900 x 600 x 750	Enclosure with hinged front door (longer side)
TE-90-60-SLD	900 x 600 x 750	Enclosure with sliding front door (longer side)
TE-90-90-HD	900 x 900 x 900	Enclosure with hinged front door
TE-90-90-SLD	900 x 900 x 900	Enclosure with sliding front door
TE-120-90-HD	1200 x 900 x 900	Enclosure with hinged front door (longer side)
TE-120-90-SLD	1200 x 900 x 900	Enclosure with sliding front door (longer side)
TE-120-120-HD	1200 x 1200 x 900	Enclosure with hinged front door
TE-120-120-SLD	1200 x 1200 x 900	Enclosure with sliding front door
TE-180-120-HD	1800 x 1200 x 900	Enclosure with hinged front door (longer side)
TE-180-120-SLD	1800 x 1200 x 900	Enclosure with sliding front door (longer side)

Accessories

(LED Light and Power Socket)

Model No:	Size (L x B x H) mm
PS-15A-1	15A power socket with switch : 1 No
PS-15A-2	15A power socket with switches : 2 Nos.
PS-15A-3	15A power socket with switches : 3 Nos.
LED-RF-1	Roof LED with Switch : 1 No
LED-RF-2	Roof LED with Switches : 2 Nos.



Please note that the under table shelf must be ordered at the same time as the optical table.

Shelves for lasers, Power supplies & Accessories

HOLMARC offers optical table laser shelves. It saves space when installing a laser and other equipment beneath optical table tops. Laser Ports in a Table Top are used to let a laser beam or cables through.



Small Size Transparent Enclosures & Black Enclosures

Holmarc's Small Size Enclosures consists of acrylic panels (Transparent or Black) and extruded aluminium frame. Front door is available with two options : hinged and sliding door. Enclosure frame is black powder coated. Two cable ports with end caps are provided on the back side of the enclosure. Mounting clamps are provided for fixing the enclosure with breadboard.

- ▶ Acrylic panels with aluminum frame
- ▶ Transparent or black panels are available

Specifications

Frame material	Aluminium
Panels	2 - 3 mm thick transparent acrylic 2 - 3 mm thick black acrylic
Visibility	95 %, 0% for Black enclosure
Side panel fixing method	Tightened by rubber beading inside frame slots
Number of cable ports with endcaps	2 Nos.
Front door	Hinged or sliding
Finish (frame)	Black powder coated



[http://www.holmarc.com/
small_size_transparent_enclosures.php](http://www.holmarc.com/small_size_transparent_enclosures.php)



Model No:	Size (L x B x H) mm	Type
TSE-300-300-SLD	300 x 300 x 300	Enclosure with sliding front door
TSE-300-300-HD	300 x 300 x 300	Enclosure with hinged front door
TSE-600-300-SLD	600 x 300 x 300	Enclosure with hinged front door (600 mm side)
TSE-600-300-HD	600 x 300 x 300	Enclosure with sliding front door (longer side)
TSE-600-600-SLD	600 x 600 x 300	Enclosure with sliding front door
TSE-600-600-HD	600 x 600 x 300	Enclosure with hinged front door
TSE-900-600-SLD	900 x 600 x 450	Enclosure with sliding front door (900 mm side)
TSE-900-600HD	900 x 600 x 450	Enclosure with hinged front door (900 mm side)
TSE-900-900-SLD	900 x 900 x 450	Enclosure with sliding front door
TSE-900-900-HD	900 x 900 x 450	Enclosure with hinged front door
TSE-A-B-C-SLD	A x B x C ***	Enclosure with sliding front door (longer side)
TSE-A-B-C-HD	A x B x C ***	Enclosure with hinged front door (longer side)

*** Order by specifying A, B & C (Example)

1. **TSE-950-650-500-SLD** Enclosure with sliding door (950 mm side)
2. **TSE-850-450-300-HD** Enclosure with hinged door (850 mm side)

Black Enclosures

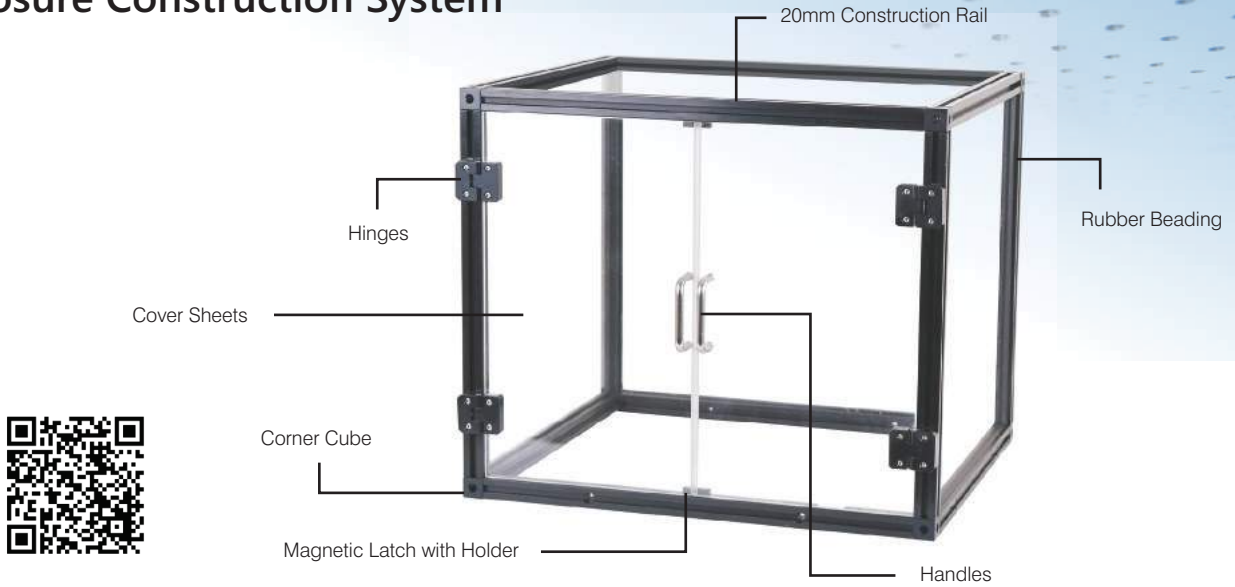


Model No:	Size (L x B x H) mm	Type
BLE-300-300-SLD	300 x 300 x 300	Enclosure with sliding front door
BLE-300-300-HD	300 x 300 x 300	Enclosure with hinged front door
BLE-600-300-SLD	600 x 300 x 300	Enclosure with hinged front door (600 mm side)
BLE-600-300-HD	600 x 300 x 300	Enclosure with sliding front door (longer side)
BLE-600-600-SLD	600 x 600 x 300	Enclosure with sliding front door
BLE-600-600-HD	600 x 600 x 300	Enclosure with hinged front door
BLE-900-600-SLD	900 x 600 x 450	Enclosure with sliding front door (900 mm side)
BLE-900-600HD	900 x 600 x 450	Enclosure with hinged front door (900 mm side)
BLE-900-900-SLD	900 x 900 x 450	Enclosure with sliding front door
BLE-900-900-HD	900 x 900 x 450	Enclosure with hinged front door
BLE-A-B-C-SLD	A x B x C ***	Enclosure with sliding front door (longer side)
BLE-A-B-C-HD	A x B x C ***	Enclosure with hinged front door (longer side)

*** Order by specifying A, B & C (Example)

1. **BLE-950-650-500-SLD** Enclosure with sliding door (950 mm side)
2. **BLE-850-450-300-HD** Enclosure with hinged door (850 mm side)

Enclosure Construction System



1. 20 mm Construction Rail

Model No:	Mounting	Length (mm)
BX-20RL-210	M4 tapped holes on both ends	210
BX-20RL-260		260
BX-20RL-310		310
BX-20RL-360		360
BX-20RL-410		410
BX-20RL-460		460
BX-20RL-510		510
BX-20RL-560		560
BX-20RL-710		710
BX-20RL-860		860
BX-20RL-960		960
BX-20RL-1200	1200	
BX-20RL-XXX	Custom length *	

* Maximum length upto - 1800 mm only

2. Corner Cube

Model No	Size (mm)	Mounting
BX-20-CC	20 x 20 x 20	M4 CBR

3. Hinges

Model No
BX-20-HG

4. Magnetic latch with holder

Model No
BX-20-MGH

5. Handles

Model No	Type
BX-20-SSU	Stainless steel U shaped handle along with mounting plate screws and T nut
BX-20-PH4	Plastic handle (4 inch) with insert screws and T nut

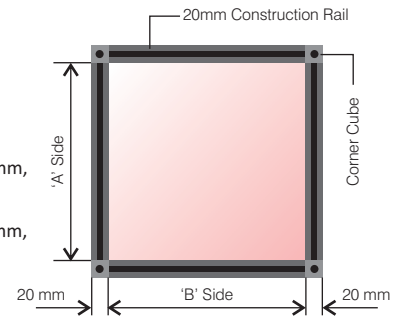
6. Cover Sheets

Model No:	L x W (mm)	Type
BX-20-3TAS-A-B	A x B	3 mm thick transparent acrylic sheet (custom size *)
BX-20-3BAS-A-B	A x B	3 mm thick black acrylic sheet (custom size *)

Method to specify A and B

'A' side rail length + 10 mm
'B' side rail length + 10 mm

Eg: 'A' side rail length = 360 mm, then L = 370 mm
'B' side rail length = 510 mm, then W = 520 mm



7. Rubber beading : It is used for tightening the panels inside aluminium frame.

Model No:	Size
BX-20-RB	5 meters

8. Clamps

Model No:	Type
BX-20-TB	Table clamp for fixing to breadboard

9. T-nut and Screws

Model No:	Type	Quantity
BX-20-TN	T - nut	50 per pack
BX-20-M4-10	M4 x 10 screw	50 per pack
BX-20-M3-10	M3 x 10 screw	50 per pack
Allen key	Allen key set	1 set
Spring washer	Spring washer	50 per pack



OVERHEAD SHELF SYSTEMS for Optical Breadboard Table

Overhead Shelves - Standing Type

HOLMARC offers optical table shelves to meet your need for more organized and ergonomic lab space. Shelves are designed to be highest quality and sturdy to provide safe and reliable accessory options. Overhead shelves free standing type can be used for mounting vibration producing equipment above the optical breadboard. The height of shelf can be easily adjusted. Shelves can be positioned at any position along the rail.

Standard unit consists of height adjustable 2 sets of overhead shelf and supporting structure. Height can be adjusted in 50mm increments using M10 screws. Structures are based on steel welded design with black powder coat finish. Platform material is multiwood (extruded 'U' Pvc polyester resin). M6 Mounting holes provided across the shelves and supporting structure for mounting accessories like additional shelves, bottom shelf computer stand, power strip, tool organiser etc. Electrical wires from the instruments can be organized by cable strips (sold separately). For lighting needs LED tube lighting and spots lights are available.

Model No:	Supported Breadboard Width
OHS-1200	1200mm
OHS-1500	1500mm
OHS-1800	1800mm
OHS-2400	2400mm
OHS-3000	3000mm

OHS Optional Accessories

- | | |
|---------------------|-------------------------|
| 1. Additional Shelf | 5. Monitor Mounting Arm |
| 2. Bottom Shelf | 6. Cable Routing Clips |
| 3. Storage Systems | 7. LED Lights |
| 4. Power Strips | 8. L-Clamp |

Note : Accessories sold separately

Dia-11mm holes are provided for fixing platform any were on the structure.
Dia-11mm holes provided on top of the structure for mounting additional components

- ▶ Maximized table space, ergonomics and utility
- ▶ Mechanical isolation for the equipment
- ▶ Convenient location of instruments.
- ▶ Height adjustable design for overhead shelves
- ▶ Leveling feet for uneven floors.
- ▶ Steel welded design, black powder coat finished.
- ▶ Custom shelving units(Optional).
- ▶ Electrical outlets (230V / 50Hz) on each side of the shelf



Specifications

Structural material : Steel welded design
Finish : Black powder coat
Platform material : Multiwood
Platform adjustable height increments : 50mm
Maximum platform height : xxx mm
Minimum gap between two platform : Xxmm



BREADBOARD OVERHEAD SHELF

An overhead shelf is an ideal storage rack for equipment and instrumentation used in conjunction with an optical table. Users can conveniently and easily store their power suppliers, controllers, oscilloscopes, computers and other instruments. Contact us for discussion of your requirements.

Call Us : 0484 2540075
E-mail : sales@holmarc.com



1. Additional Shelves

It consists of platform, mounting bracket and suitable mounting screws. Construction based on steel welded design with black powder coat finished. Platform is made of multiwood (extruded 'U' Pvc polyester resin). M6 Mounting holes provided across the shelves for mounting accessories like , power strips, LED Lights, storage box etc.

Model No:	Suitable over head shelves
AR-OHS-1200	OHS-1200
AR-OHS-1500	OHS-1500
AR-OHS-1800	OHS-1800
AR-OHS-2400	OHS-2400
AR-OHS-3000	OHS-3000

2. Bottom shelf

It consists of platform and mounting bracket and suitable mounting screws. Construction based on steel welded design with black powder coat finished. Platform is made of multiwood (extruded 'U' Pvc polyester resin). It saves space when installing a laser and other equipment beneath optical table tops. Laser Ports in a Table Top are used to let a laser beam or cables through.

Model No:	Suitable over head shelves
AR-OHS-1200	OHS-1200
AR-OHS-1500	OHS-1500
AR-OHS-1800	OHS-1800
AR-OHS-2400	OHS-2400
AR-OHS-3000	OHS-3000

3. Storage Systems



a) Storage box unit with 8 storage boxes

This unit can be mount on the side structure, 8 storage (2x4) boxes can be fix in this unit to store screws and other small things. Quick access box organizer is mounted in front of rack shelves.

Model No:	Number of storage box in mounting board
OHS-SBU-08	8

b) Quick access Storage box

Quick access box organizer is mounted in front of rack shelves for convenient accessing of mostly used components.

Model No:	Number of storage box in mounting board
OHS-SBU-1	1
OHS-SBU-2	2
OHS-SBU-3	3

c) Tool Organizer (Pegboard)



Tool Organizer - Pegboard is a regularly spaced hooks of metal black board designed for the storage of various tools, including allen keys, screwdrivers, spanners. It offers maximum toolboard storage versatility having 250x400mm of pegboard storage space.

Pegboard can be mount on the side wall of shelves supporting structure.

Model No:
OHS-PEG-10

d) Quick access tool organizer

This type of tool organizer is mounted in front of rack shelves for quick accessing the mostly required tools. It provide easy access and organization for the tools. These are small type of holders allows only one or two types of tool set.

Model No:	Tool Organizer Type
OHS-PEG-QA-1	For allen keys
OHS-PEG-QA-2	For Screw drivers
OHS-PEG-QA-3	10 hooks for hanging tools

4. Electrical Power Strips



Suitable clamps are provided for each power strips for fixing directly to the to shelves by using M6 screw. Power strips can be mounted on the bottom, back and front side or vertically on the structure. Electrical lines can be easily routed by using cable routing clips (Please see the model OHS-CRL-25 cable routing clip).

Model No:	Power strip Type
OHS-PS-1	Single power socket with switch
OHS-PS-5	Five power socket with switch
OHS-PS-10	Ten power socket with switch
OHS-PS-16	Sixteen power socket with switch

All models consist of one power strip, six meter cable and three pin power plug.

5. Monitor Mounting Arm



Model No:
OHS-MSA-1

Single monitor mounting arm adjusts effortlessly for easy use. Arm extends and retracts, tilt to change reading angles. Built to hold monitors up to 10kg. M6 Mounting holes pitch 100mm provided on the vertical structure for fixing universal monitor mounting arm.

6. Cable Routing clips - Cable Holder



These small clips are side load type, Ideal for keeping wires out of sight and away from possible damage. It is designed to be installed on a shelves panel edge. It can hold a single cord or cable firmly in any desired route. The extra-wide opening allow easy insertion and removal of cables.

Cable routing clip have M6 screw holes for fixing any direction on the platform or on the vertical structure.

Model No:	Item
OHS-CRL-25	Cable routing clip - 20No.s

7. LED Lightings



HOLMARC offers two options for under shelves lab lighting, LED strips light and LED Spot lighting. LED power cables can be easily routed by using cable routing clips. LED Light strips and spot lightings are mount to the underside of the overhead shelf. It is ideal for lighting the entire work surface, LED light strips are attaches via L-Clamps.

Model No:	Item
OHS-LED-1	1 Feet Led tube
OHS-LED-2	2 Feet Led tube
OHS-LED-2	4 Feet Led tube
OHS-LED-SP-1	Flexible arm LED Spot Light

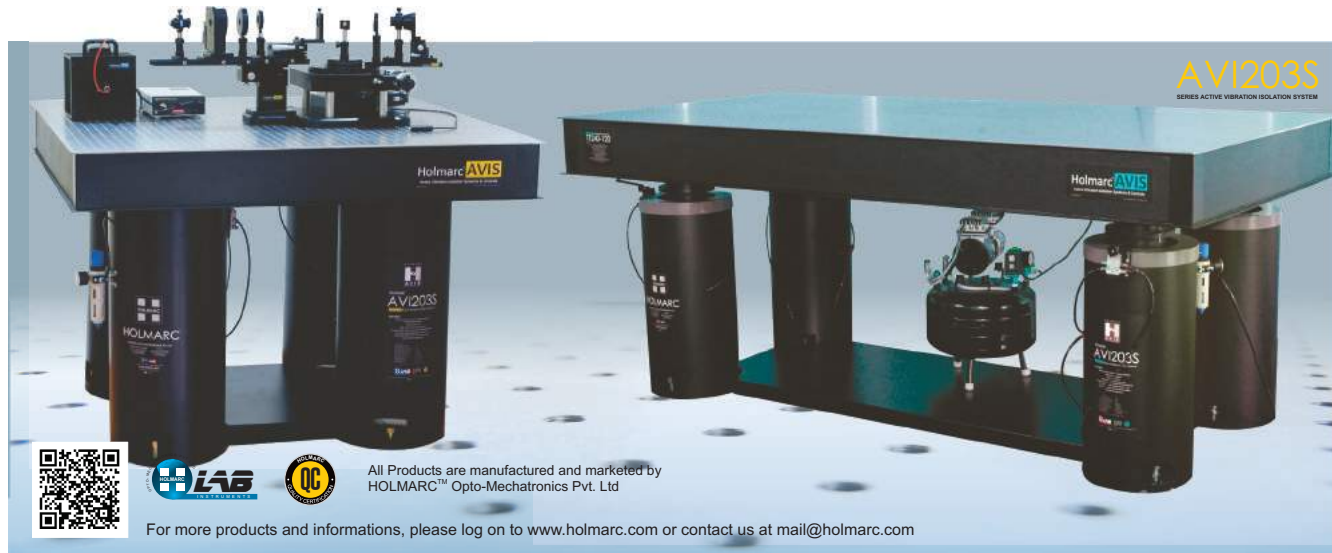
All models consists of two meter cable with two pin and L-Clamp for mounting

8. L-Clamp



L Clamps are used to fix LED light or electrical power strips in any position on overhead shelves. Two M6 slots and four M3 tapped holes are provided on the L-clamp for mounting needs.

Model No:	Item
OHS-LC-25	L-Clamp - 10No.s



All Products are manufactured and marketed by
HOLMARC™ Opto-Mechatronics Pvt. Ltd

For more products and informations, please log on to www.holmarc.com or contact us at mail@holmarc.com

HONEYCOMB BREADBOARDS

Extreme Light Weight Breadboards

Extreme light weight breadboards are available in various sizes. These models are only 30mm thick. It has honeycomb core made of aluminium to reduce weight. These breadboards are perfect for optical systems where mobility is more important than high level of rigidity and damping.

MAGNETIC SKIN		NON MAGNETIC SKIN	
Model No:	Model No:	Length (cm)	Width (cm)
ELLBB 60-30	ELLNMBB 60-30	60	30
ELLBB 60-60	ELLNMBB 60-60	60	60
ELLBB 90-60	ELLNMBB 90-60	90	60
ELLBB 90-90	ELLNMBB 90-90	90	90
ELLBB 120-90	ELLNMBB 120-90	120	90
ELLBB 120-120	ELLNMBB 120-120	120	120
ELLBB 180-120	ELLNMBB 180-120	180	120



Magnetic Specifications

- ▶ Thickness : 30mm
- ▶ 3mm thick magnetic SS top skin (SS410).
- ▶ Bottom skin made of 2 mm thick epoxy coated aluminium
- ▶ Aluminium honeycomb core
- ▶ Core cell size of 6 sq. cm.(Approx.)
- ▶ Nylon cups under each tapped hole
- ▶ +/- 0.1 mm flatness on top over 300 mm x 300 mm area (non-cumulative error)
- ▶ M6 tapped holes at 25 mm grid.
- ▶ Semi solid epoxy bonding
- ▶ Side walls finished with black form sheet having matte finish

Non-Magnetic Specifications

- ▶ 3mm thick non-magnetic SS top skin(SS304)
- ▶ Bottom skin made of 2 mm thick epoxy coated aluminium.

All other specifications remain the same as those of magnetic honeycomb table top.

Optical LAB Worktable (Economy Version)

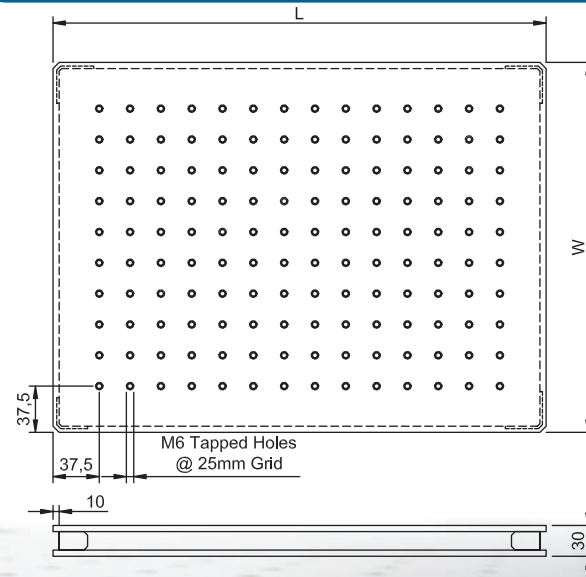
EDU 2001 Series

HOLMARC EDU 2001 Series is an easy-to-assemble optical work table based on a lightweight honeycomb optical breadboard. The worktable is supported on all 4 sides by steel sheet frames and are designed to be lightweight, portable and rigid support for optical breadboards. Working height of EDU 2001 Series worktable is 750mm including optical breadboard.



EDU 2003 SERIES

Model No:	Length (cm)	Width (cm)
EDU 2001-L96	90	60
EDU 2001-L99	90	90
EDU 2001-L126	120	60
EDU 2001-L129	120	90
EDU 2001-L1212	120	120



Honeycomb Breadboards Light Weight



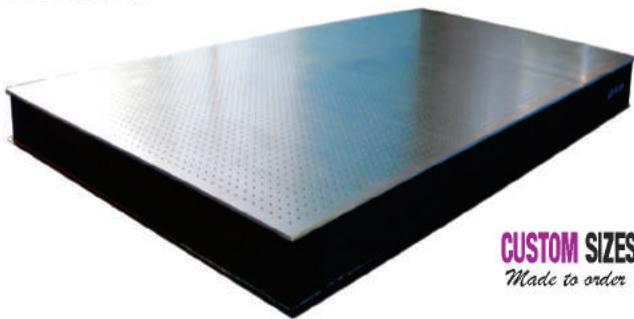
Light weight breadboards are constructed using 3mm thick ferromagnetic stainless steel sheet as top skin and 2mm thick aluminium sheet as bottom skin. It has honeycomb core made of aluminium to reduce weight. These light weight breadboards exhibit high natural frequency and nominal broadband damping.

We also manufacture non-magnetic version of these breadboards. In these breadboards top skin and bottom skin are made of non-magnetic materials.



MAGNETIC SKIN	NON MAGNETIC SKIN		
Model No:	Model No:	Length (cm)	Width (cm)
LLBB 60-30	LLNMBB 60-30	60	30
LLBB 60-60	LLNMBB 60-60	60	60
LLBB 90-60	LLNMBB 90-60	90	60
LLBB 90-90	LLNMBB 90-90	90	90
LLBB 120-90	LLNMBB 120-90	120	90
LLBB 120-120	LLNMBB 120-120	120	120
LLBB 180-120	LLNMBB 180-120	180	120

Honeycomb Breadboards Standard



Honeycomb breadboards from Holmarc use magnetic stainless steel (SS410 series) as top skin. Core of the breadboard is honeycomb structure made from aluminium. Thickness of these breadboards generally vary between 60 mm and 100 mm. Honeycomb breadboards can be placed on any working tables to quickly build optical working surfaces which will add the convenience of tapped holes grid in addition to the rigidity and stability of honeycomb structure. These can as well be used to build extra elevated working surfaces on optical tables. With suitable angle brackets and clamps, vertical working surfaces can also be created.



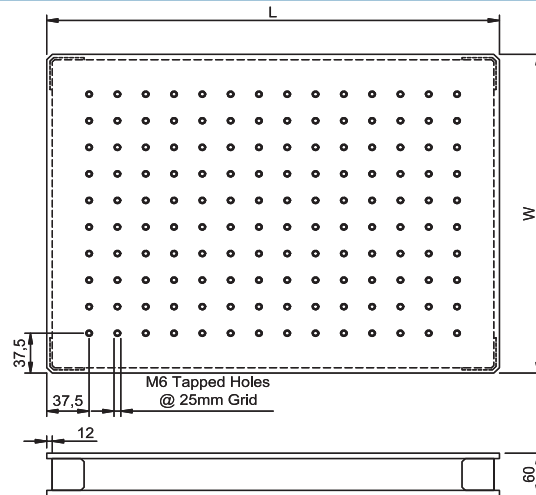
Magnetic Specifications

- ▶ Thickness : 60mm
- ▶ 3mm thick magnetic SS top skin (SS410).
- ▶ Bottom skin made of 2 mm thick epoxy coated aluminium
- ▶ Aluminium honeycomb core
- ▶ Core cell size of 6 sq. cm.(approx.)
- ▶ Nylon cups under each tapped hole
- ▶ +/- 0.1mm flatness on top over 300mm square area
- ▶ M6 tapped holes on 25 mm grid.
- ▶ Semi solid epoxy bonding
- ▶ Side walls finished with black form sheet having matte finish
- ▶ Compressed wooden particle boards as side walls to damp acoustic vibrations.

Non-Magnetic Specifications

- ▶ 3mm thick non-magnetic SS top skin(SS304)
- ▶ Bottom skin made of 2mm thick epoxy coated aluminium.

All other specifications remain the same as those of magnetic honeycomb table top.



Magnetic Specifications

- ▶ 5mm thick magnetic SS top skin (SS410)
- ▶ Bottom skin : 5 mm thick epoxy coated steel
- ▶ 0.25 mm thick aluminium honeycomb core
- ▶ Core cell size of 6 sq. cm.(approx.)
- ▶ Nylon cups under each tapped holes
- ▶ +/- 0.1 mm flatness on top over 300 mm x 300 mm area (non-cumulative error)
- ▶ M6 tapped holes on 25 mm grid.
- ▶ Semi solid epoxy bonding
- ▶ Side walls finished with black form sheet (matte finish)
- ▶ Compressed wooden particle boards as side walls to dampen acoustic vibrations.

Non-Magnetic Specifications

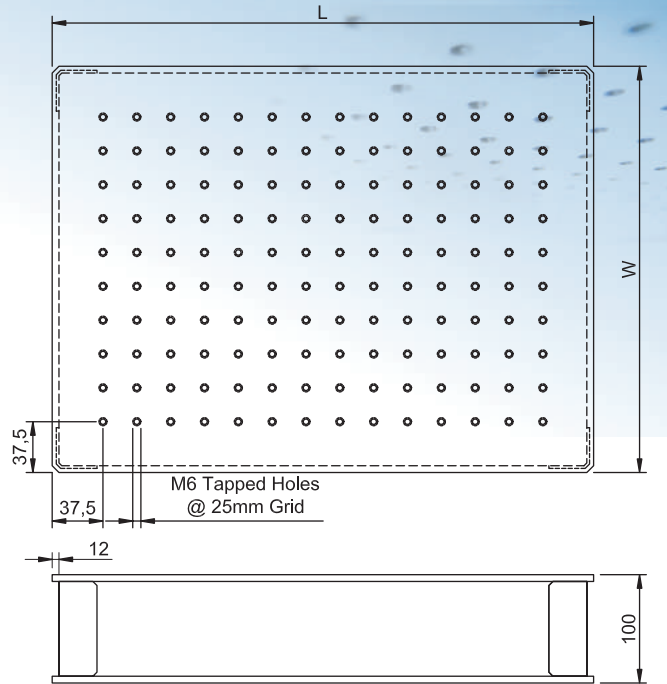
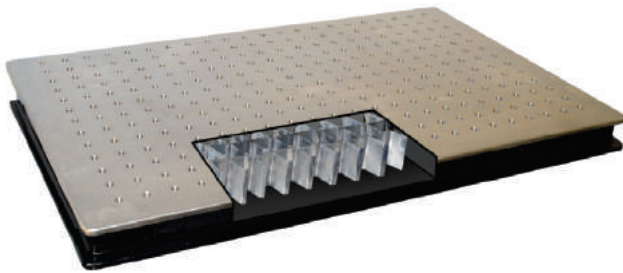
- ▶ 5mm thick non-magnetic SS top skin(SS304)
- ▶ Bottom skin made of 5 mm thick epoxy coated non-magnetic steel (SS304).

All other specifications remain the same as those of magnetic honeycomb table top.

We also manufacture non-magnetic version of these breadboards. In these breadboards, top skin and bottom skin are made of non-magnetic stainless steel. Core is made of either aluminium or non-magnetic stainless steel sheet.



MAGNETIC SKIN	NON MAGNETIC SKIN	Length (mm)	Width (mm)	Height (mm)
Model No: BB 60-30	Model No: BBNM 60-30	600	300	60
BB 60-60	BBNM 60-60	600	600	60
BB 90-60	BBNM 90-60	900	600	100
BB 90-90	BBNM 90-90	900	900	100
BB 120-90	BBNM 120-90	1200	900	100
BB 120-120	BBNM 120-120	1200	1200	100
BB 180-120	BBNM 180-120	1800	1200	100



CUSTOM OPTICAL BREADBOARDS & SUPPORTS

Holmarc can quickly provide custom configurations for optical breadboards and platforms to suit your application and environment. Many of our breadboards are built to fulfill a specific purpose and have custom mounting hole patterns, through-holes and shapes. We will do our best to meet your performance level and budgetary needs. HOLMARC's experienced support engineers will be glad to help you.

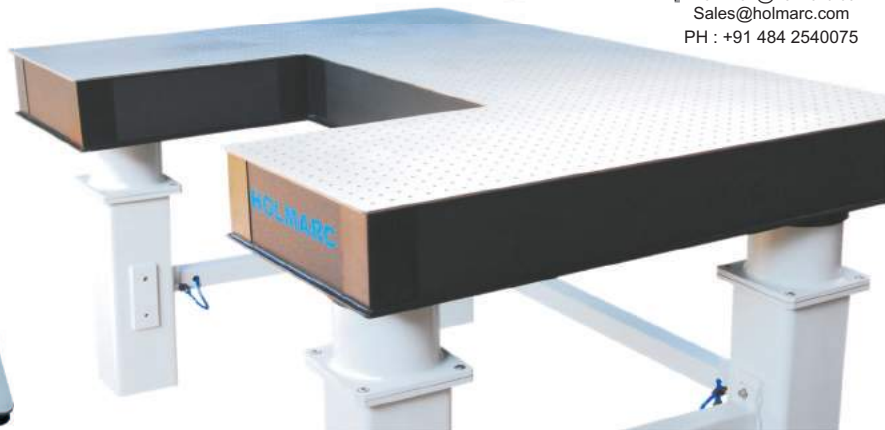
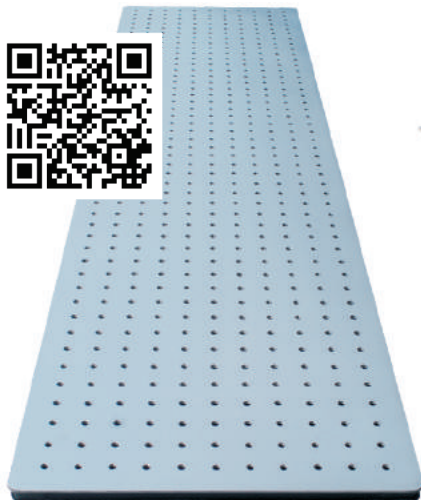
Custom Configurations

- Custom hole patterns
- Custom sizes and shapes
- Special materials
- Through-holes and ports
- Laser ports



CUSTOM SIZES
Made to order

Visit us at www.holmarc.com
E-mail: mail@holmarc.com
Sales@holmarc.com
PH : +91 484 2540075



Honeycomb Tabletops

Honeycomb tabletops from Holmarc provide rigid and stable optical working surfaces with the convenience of tapped holes at 25mm grid for mounting components and modules. Honeycomb core made of 0.25mm thick aluminium sheet. Though compressed particle boards are used as side walls in most cases due to its vibration damping properties, Holmarc can also provide tabletops with steel and aluminium side walls. Semi-solid epoxy is used to construct the honeycomb core as well as to bind top and bottom skins to the core. This special epoxy binding absorbs low frequency vibrations to a certain extent and provide considerable damping even without the use of isolated supports.



Magnetic Specifications

- ▶ 5mm thick magnetic SS top skin.(SS410)
- ▶ Bottom skin made of 5 mm thick epoxy coated steel
- ▶ 0.25 mm thick aluminium honeycomb core.
- ▶ Core cell size of 6 sq. cm.(approx.)
- ▶ Nylon cups under each tapped holes
- ▶ +/- 0.1 mm of flatness on top over 300 mm x 300 mm area (non-cumulative error)
- ▶ M6 tapped holes at 25 mm grid.
- ▶ Semi solid epoxy bonding
- ▶ Side walls finished with black form sheet having matte finish
- ▶ Compressed wooden particle boards as side walls to damp acoustic vibrations.

Non-Magnetic Specifications

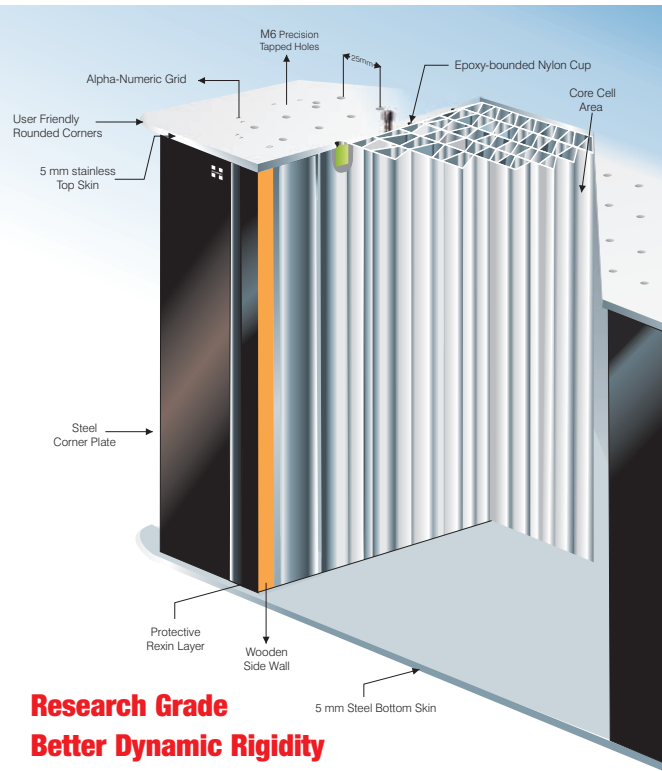
- ▶ 5mm thick non-magnetic SS top skin(SS304)
 - ▶ Bottom skin made of 5 mm thick epoxy coated non-magnetic steel (Ss304).
- All other specifications remain the same as those of magnetic honeycomb table top.*



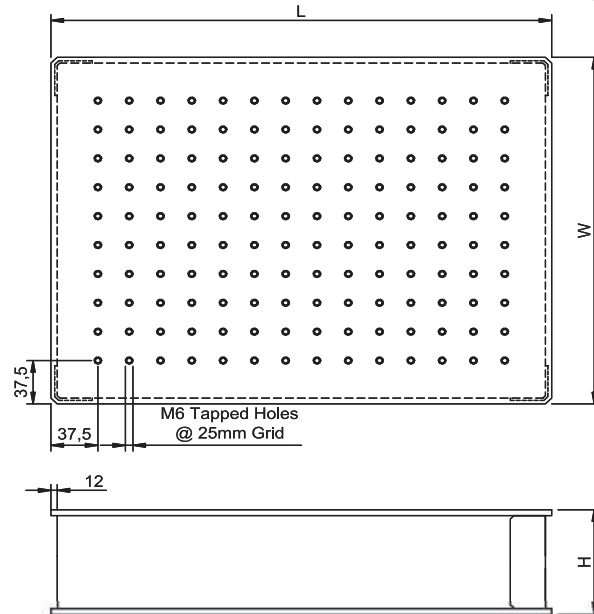
MAGNETIC SKIN	NON MAGNETIC SKIN			
Model No:	Model No:	Length (cm)	Width (cm)	Height (cm)
TT 90-90	TTNM 90-90	90	90	15
TT 120-90	TTNM 120-90	120	90	15
TT 120-120	TTNM 120-120	120	120	15
TT 180-120	TTNM 180-120	180	120	20
TT 240-120	TTNM 240-120	240	120	20
TT 300-120	TTNM 300-120	300	120	20
TT 180-150	TTNM 180-150	180	150	20
TT 240-150	TTNM 240-150	240	150	20
TT 300-150	TTNM 300-150	300	150	20
TT 360-150	TTNM 360-150	360	150	20

Refer Page **018**

TABLETOP SUPPORTS



**Research Grade
Better Dynamic Rigidity**

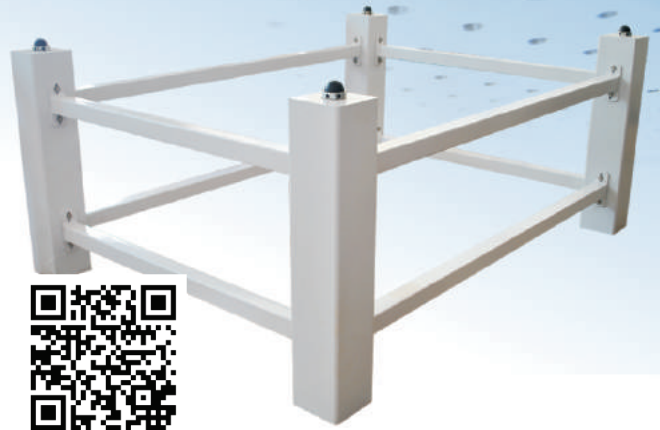


TABLETOP SUPPORTS

Rigid Tabletop Support



Rigid table top support system has four vertical members made from rectangular steel tubes and eight horizontal members made from 50 mm x 50 mm steel tubes. These members can be joined by nuts & bolts at the lab site. The honeycomb surface rest on four heavy-duty bolts on the top of the support system, which can also be adjusted for leveling. The adjustment range is +/- 5 mm. The support system is given moon light finish by epoxy paint.



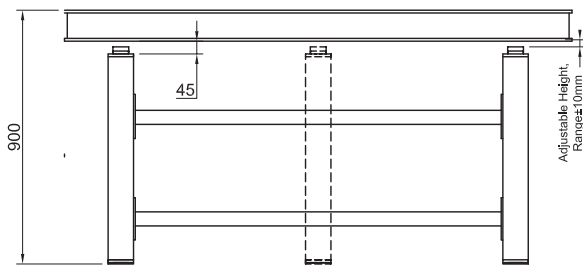
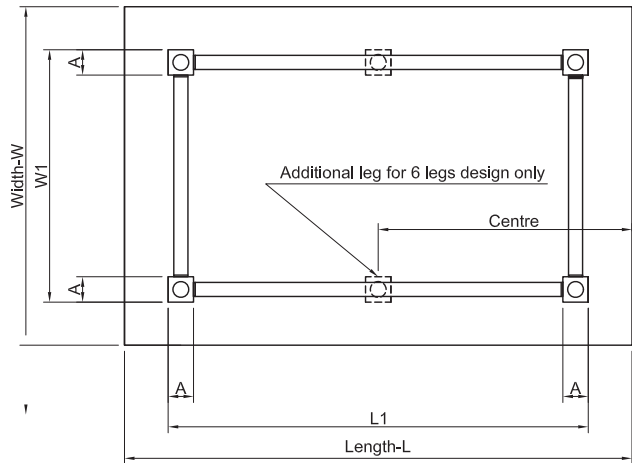
RIGID TABLETOP SUPPORT					
Model No:	Suitable for Tabletop Model	LxW (mm)	L1xW1 (mm)	A (mm)	No. of Legs
RTS 60-60	TT 60-60	600 x 600	500 x 500	90	4
RTS 90-60	TT 90-60	900 x 600	800 x 500	90	4
RTS 90-90	TT 90-90	900 x 900	800 x 800	90	4
RTS 120-90	TT 120-90	1200 x 900	1000 x 700	90	4
RTS 120-120	TT 120-120	1200 x 1200	820 x 820	90	4
RTS 180-120	TT 180-120	1800 x 1200	1420 x 820	90	4
RTS 180-150	TT 180-150	1800 x 1500	1420 x 1120	90	4
RTS 240-120	TT 240-120	2400 x 1200	2020 x 820	135	4
RTS 300-120	TT 300-120	3000 x 1200	2620 x 820	135	6
RTS 300-150	TT 300-150	3000 x 1500	2620 x 1120	135	6
RTS 350-150	TT 350-150	3500 x 1500	3120 x 1120	135	6
RTS 360-150	TT 360-150	3600 x 1500	3220 x 1120	135	6

Passive Vibration Isolation System

Independent Legs



Passive air isolators are employed in this series of table supports for isolating the tabletop from vertical and horizontal disturbances. The system has vertical and horizontal natural frequencies of 4 - 8 Hz and effectively isolates vibrations in the critical range of 10- 50 Hz. Here the legs operate independently. The isolators which are fixed to four vertical members of the support system are individually filled with air by a portable pump to a pressure of 25 PSI. Once pressurized, the procedure need not be repeated for a long period. The system is cost effective, maintenance free and easy to operate.



PASSIVE VIBRATION ISOLATION SUPPORT					
Model No:	Suitable for Tabletop Model	LxW (mm)	L1xW1 (mm)	A (mm)	No. of Legs
PVISA 60-60	TT 60-60	600 x 600	500 x 500	135	4
PVISA 90-60	TT 90-60	900 x 600	800 x 500	135	4
PVISA 90-90	TT 90-90	900 x 900	800 x 800	135	4
PVISA 120-90	TT 120-90	1200 x 900	1000 x 700	135	4
PVISA 120-120	TT 120-120	1200 x 1200	820 x 820	135	4
PVISA 180-120	TT 180-120	1800 x 1200	1420 x 820	135	4
PVISA 240-120	TT 240-120	2400 x 1200	2020 x 820	135	4
PVISA 300-120	TT 300-120	3000 x 1200	2620 x 820	135	6
PVISA 180-150	TT 180-150	1800 x 1200	1420 x 820	135	4
PVISA 240-150	TT 240-150	2400 x 1500	2020 x 1120	135	4
PVISA 300-150	TT 300-150	3000 x 1500	2620 x 1120	135	6
PVISA 360-150	TT 360-150	3600 x 1500	3220 x 1120	135	6



Passive Vibration Isolation System

Interconnected Legs



In PVISI series passive vibration isolation systems, isolated legs are interconnected by pneumatic tubes for air filling. Air can be filled through the inlet valve in one of the isolators. Once the air is pumped using a compressor, it is uniformly distributed to all the isolator legs. The pressure of air to be filled is 25-35 PSI. Air filter is provided to supply moisture free air to the system to avoid condensation in air. Air needs to be filled in the legs at least once in a month.

Isolated supports isolates the table top from vertical and horizontal disturbances. The system has vertical and horizontal natural frequencies of 4 - 8 Hz and effectively isolates vibrations in the critical range of 10- 50Hz.



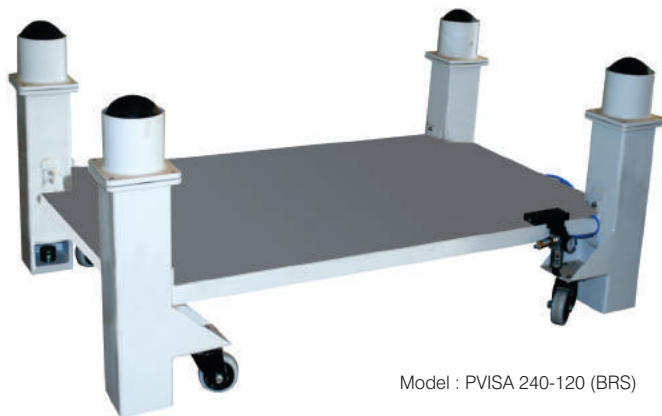
Fig. PVISA 120-120

PASSIVE VIBRATION ISOLATION SUPPORT					
Model No:	Suitable for Tabletop Model	LxW (mm)	L1xW1 (mm)	A (mm)	No. of Legs
PVISI 60-60	TT 60-60	600 x 600	500 x 500	135	4
PVISI 90-60	TT 90-60	900 x 600	800 x 500	135	4
PVISI 90-90	TT 90-90	900 x 900	800 x 800	135	4
PVISI 120-90	TT 120-90	1200 x 900	1000 x 700	135	4
PVISI 120-120	TT 120-120	1200 x 1200	820 x 820	135	4
PVISI180-120	TT 180-120	1800 x 1200	1420 x 820	135	4
PVISI 240-120	TT 240-120	2400 x 1200	2020 x 820	135	4
PVISI 300-120	TT 300-120	3000 x 1200	2620 x 820	135	6
PVISI 180-150	TT 180-150	1800 x 1200	1420 x 820	135	4
PVISI 240-150	TT 240-150	2400 x 1500	2020 x 1120	135	4
PVISI 300-150	TT 300-150	3000 x 1500	2620 x 1120	135	6
PVISI 360-150	TT 360-150	3600 x 1500	3220 x 1120	135	6

Note: For larger Tabletops, 6 or 8 legs have to be used depending on load. Motorized pump is supplied along with the system.

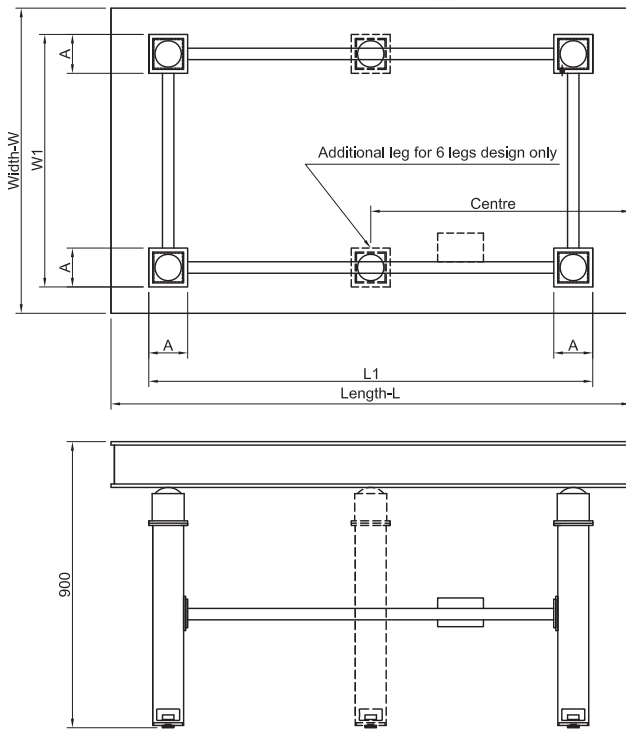


Motorised Pump Model : CP-100 >>



Model : PVISA 240-120 (BRS)

Custom sizes can also be made upon request; please contact Tech Support Engineer with your requirements and for pricing.



Accessories

Accessory Order Code

Overhead Table Shelf	OTS
Faraday Cages	FCU
Transparent, Semitransparent & Opaque Full body Enclosure	TEU, SEU & OEU
Central Rack	CRS
Bottom Rack	BRS
Heavy Duty Casters	HDC

Accessories code can be added along with the rigid tabletop support model number under bracket for ordering. Eg. **RTS 120-120 (OTS, CRS, BRS, HDC)**

Active Vibration Isolation Systems And Supports

Holmarc **AVIS**
Active Vibration Isolation Systems & Controls



AVI203S & AVI204S AVI Series



Pneumatic Isolation Pressure Valve

FEATURES

Featured vibration isolator SA technology

Superior vibration control

Specially designed for Interferometry and other high vibration sensitive experiments

Maintenance free operation

HOLMARC'S Active Vibration Isolation optical table supports contain an isolation system that effectively isolates the optical table from vertical and horizontal vibrations throughout the critical 3 to 50 Hz frequency range, since most common large-amplitude sources of vibrations found in laboratories vibrate within this range of frequencies. If the source of compressed air is removed, the Optical Tabletop will lower until it securely rests on the supports and the table will no longer be isolated from floor vibrations.

Our AVI Series active optical table supports can be used to significantly reduce the vibrations transmitted to an optical table setup in a noisy environment.



Fig. AVI203S Series Active vibration isolation system with TT 240-120 Honeycomb Tabletop



SPECIFICATION DATA

Active Vibration Isolators

Vertical Resonant Frequency	1.25 Hz
Horizontal Resonant Frequency	1.0 Hz
Vertical Transmissibility at Resonance	10 dB
Horizontal Transmissibility at Resonance	12 dB
Vertical Transmissibility at 5Hz	-20 dB (90%)
Horizontal Transmissibility at 5Hz	-24 dB (94%)
Vertical Transmissibility at 10Hz	-32.5 dB (97.5%)
Horizontal Transmissibility at 10Hz	-30 dB (97%)
Maximum Load Capacity (set of four)	1000 kg
Height Adjustment Range	-10 mm, +5 mm)
Self Leveling Repeatability	±0.5 mm
Height	700 mm
Air Pressure (Maximum)	80 psi
Finish	Black Paint

*The specification data above was measured under a 600 kg load (24% of maximum).



ACTIVE VIBRATION ISOLATION SUPPORT

Model No:	Suitable for Tabletop Model
AVI203S-4	Tables up to TT 120-240 Includes four numbers of AVI203S along with compressor and accessories for interconnection.
AVI203S-6	Tables above TT 120-240 Includes six numbers of AVI203S along with compressor and accessories for interconnection.

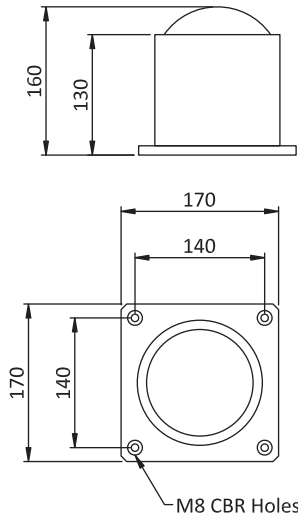
Desktop Vibration Isolation Support

Holmarc's desktop vibration isolation supports are designed to use with breadboards and small optical tables. They provide portability and localized air suspension for small-scale experiments and vibration sensitive instrumentation. This system utilizes air isolation method for vibration isolation. These are time and space saving isolators which are ideal to use with microscopes and other optical systems. Four independent air cushion legs along with an oil free air compressor are required for a setup. The system gets ready for use by just placing breadboards / tabletops on to these supports. DVIS Supports a wide range of breadboards and optical table sizes. Though normally supplied as a set of four, extra mounts can be used to increase load capacity.

DESKTOP VIBRATION ISOLATION UNIT	
Model No.	Suitable for Optical Breadboard
DVIS - 01	Light weight series
DVIS - 02	Standard series



http://www.holmarc.com/desktop_vibration_isolation_support.php



Honeycomb Breadboard Standard (BB Series)

These light weight breadboards exhibit high natural frequency and nominal broadband damping.

Top Skin

5mm thick magnetic stainless steel (SS410 series) sheet as top skin.



Bottom Skin

5mm thick steel sheet as bottom skin.

Pneumatic Controller Unit

Regulator Unit, Manifold and Pressure Gauge are kept inside. Once the air is pumped using a compressor, it is uniformly distributed to all the isolator legs.



Fig. Desktop Vibration Isolation Support

Rigid, non-isolating support frame can be upgraded to desktop vibration isolation support. Contact our technical support engineer at service@holmarc.com.



HOLMARC
Mach-Zehnder Interferometer
RESEARCHER VERSION

Model No: HO-ED-INT-06A



Oil free air compressor

Oil free air compressor will be supplied along with the Desktops Vibration Isolation Support.

Desktops Vibration Isolation Support **DVIS**

The breadboard sits on four inflated rubber cushions. All the four supports can either be independent or interconnected. In the case of interconnected legs, compressor is supplied along with the system.

Note : Optical breadboard must be purchased separately,

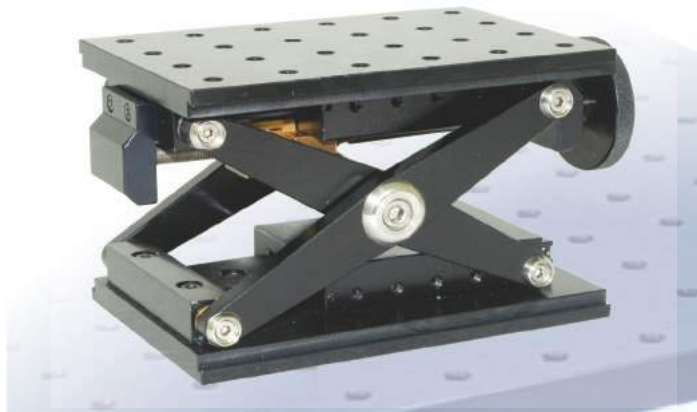
LAB JACK

Manual Lab Jack - LJ Series

This is a labjack that offers excellent rigidity and positioning accuracy. These labjacks can be used to lift assemblies like Lasers, Stages etc. This model uses scissors type design.

- ▶ Vertical height adjustment by 1 mm pitch lead screw.
- ▶ Parallelism : 0.1mm for the entire travel
- ▶ M6 tapped holes on the top at 25 mm grid.
- ▶ M6 clearance slots at bottom
- ▶ Aluminium alloy & Stainless steel construction
- ▶ Black anodized

ALUMINIUM BLACK ANODISED FINISH				
Model No:	L (mm)	B (mm)	H(min, max)mm	Load Capacity (Kg)
LJ120-75	120	75	75,120	5
LJ150-100	150	100	75, 150	10
LJ180-100	180	100	75, 150	15
LJSS300-150	300	150	100, 275	25
LJSS300-250	300	250	100, 275	30
LJSS300-300	300	300	100, 275	30
LJSS300-350	350	350	100, 275	30



XYZ Heavy Duty Translation Stages

These translation stages are designed for positioning heavy loads in X, Y and Z directions precisely without play and wobble. Preloaded roller bearing guides are used for all the three axes for friction free and play less movement.

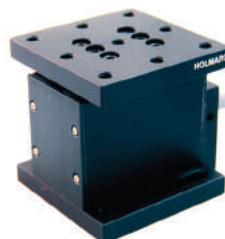
Refer Page 176 for more details



Vertical Translation Stage

Vertical movement is obtained by activating a spring-loaded cam by micrometer head.

FOR MORE DETAILS Refer Page 171



CUSTOM
GRID PATTERN



FILTER WHEELS



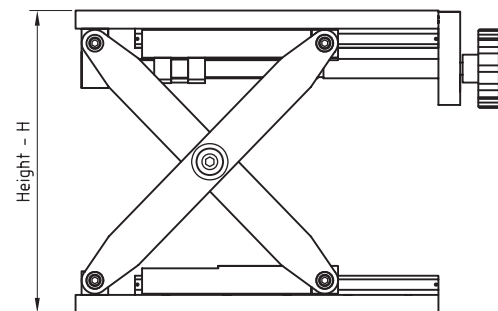
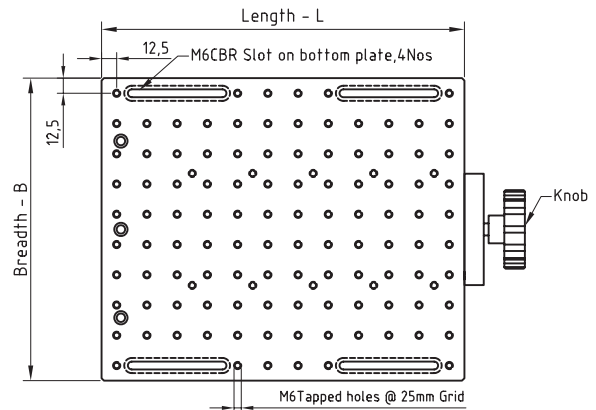
- ▶ 360° Rotation
- ▶ Post Mountable
- ▶ Base Mountable
- ▶ Detachable Base
- ▶ Lockable



Refer Page : 084

Call, email or fax for a quote.

☎ 91-484 2540075 ☎ 91-484 2540882
mail@holmarc.com, optics@holmarc.com



Motorized Lab Jack - MLJ Series

Labjacks combine precision height adjustment in a stable design with high load capacity. These Motorized Labjacks provide a rugged height adjustable platform ideal for mounting optomechanical sub assemblies requiring height adjustments. It can be controlled remotely by using a PC or a hand held unit.

The upper and lower mounting plates have M6 tapped holes and clearance slots respectively for general mounting requirements.

- ▶ Load capacity : Up to 20 kg
- ▶ Vertical height adjustment by lead screw.
- ▶ Precision roller linear guide way
- ▶ Actuator : Geared stepper motor
- ▶ Parallelism : 0.1mm for entire travel
- ▶ M6 tapped holes on the top at 25 mm grid.
- ▶ M6 clearance slots at the base
- ▶ Aluminium alloy
- ▶ Black Anodized



CUSTOM
GRID PATTERN



MLJ Series lab jacks offer excellent rigidity and positioning accuracy with high load capacity. It can be used to lift larger assemblies like lasers, microscopes etc. This model uses scissors type design.

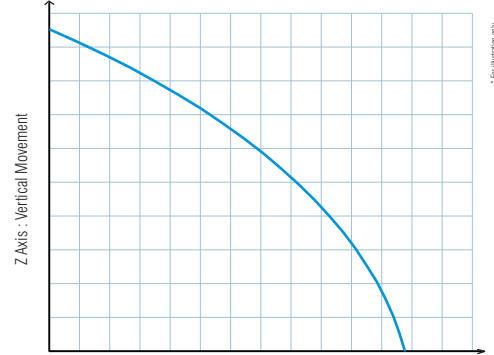


Fig. Motorized Lab Jack Movement Graph

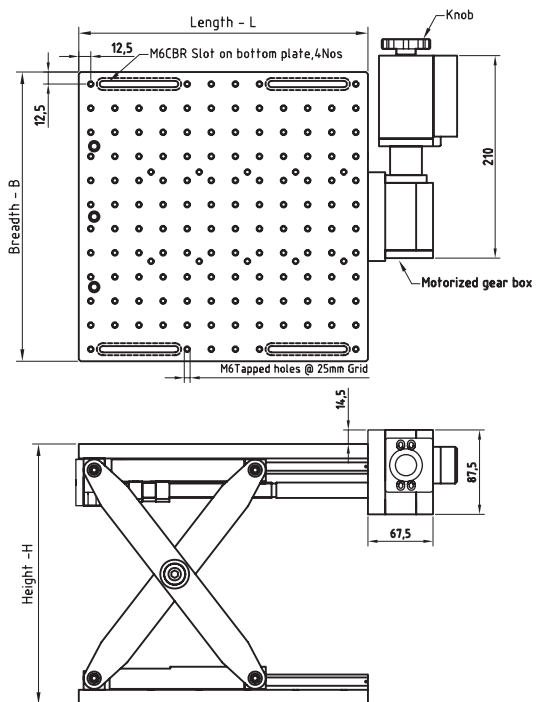
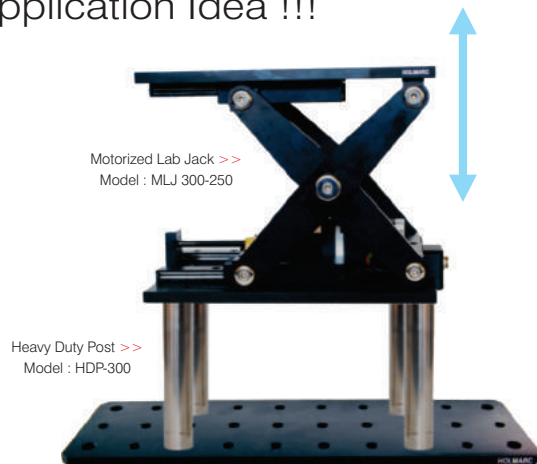
ALUMINIUM BLACK ANODISED FINISH				
Model No:	L (mm)	B (mm)	Height (min, max)	Load Capacity (kg)*
MLJ 300-150	300	150	105, 270 mm	20
MLJ 300-250	300	250	105, 270 mm	20
MLJ 300-300	300	300	105, 270 mm	20
MLJ 350-250	350	250	105, 270 mm	20
MLJ 350-300	350	300	105, 270 mm	20
MLJ 350-350	350	350	105, 270 mm	20

* Load capacity at 2 revolution per second of motor

Control Electronics and software

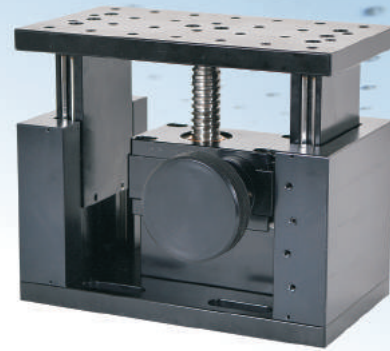
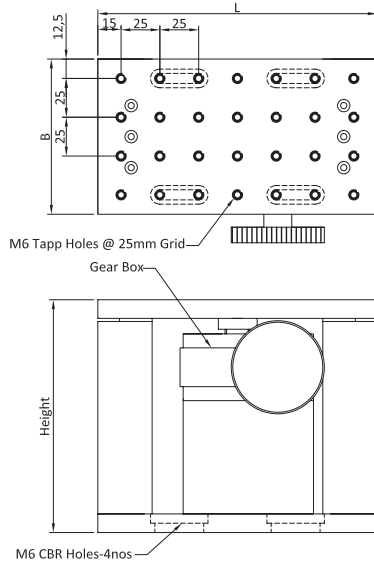
Controller sold separately please refer page 193

Application Idea !!!



Heavy Duty Lab Jack

A geared screw jack design help our jack lift weight up to 50 - 75kg, lifting platform size varies from 180 x 100 and 200 x 200mm and can raise up to 50 mm from its minimum height, precision roller slides are used to guide the heavy duty labjack in position.

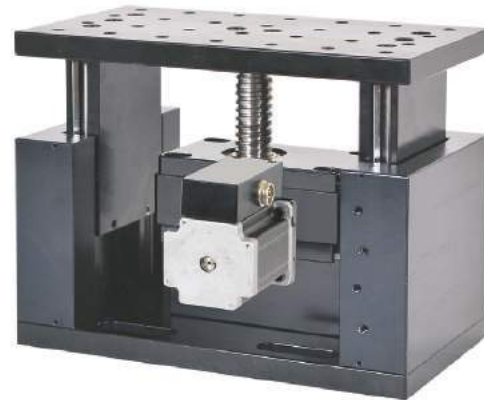
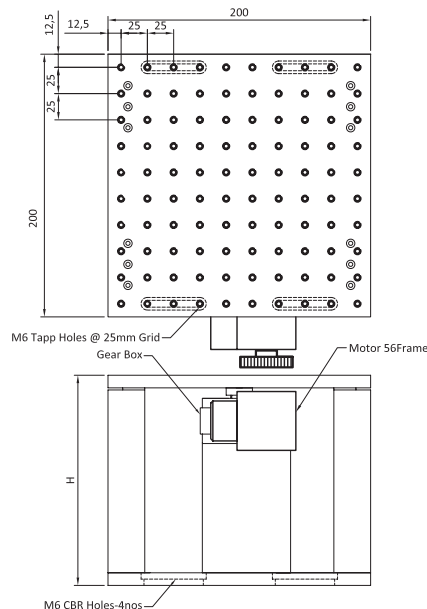


- ▶ Vertical height adjustment by 4mm pitch lead screw with Gear box
- ▶ Parallelism: 0.1 mm for entire travel
- ▶ Load Capacity : 50 to 75 kg
- ▶ Travel Range : 50 mm
- ▶ M6 tapped holes at the top at 25 mm grid
- ▶ M6 clearance slots at bottom
- ▶ Aluminium alloy
- ▶ Black anodized finish

ALUMINIUM BLACK ANODISED FINISH				
Model No:	L (mm)	B (mm)	Height (min, max)	Load Capacity (kg)*
HDLJ180-100	180	100	150, 215 mm	50
HDLJ200-200	200	200	160, 225 mm	55
HDLJ300-250	300	250	200, 300 mm	75
HDLJ350-300	350	300	225, 325 mm	100

Motorized Heavy Duty Lab Jack

A geared screw jack design help our jack lift weight up to 50 - 55kg with help of a stepper motor , lifting platform size various fro 180 x 100 and 200 x 200mm and can raise up to 50 mm from its minimum height, precision roller slides are used to guide the heavy duty labjack in position.



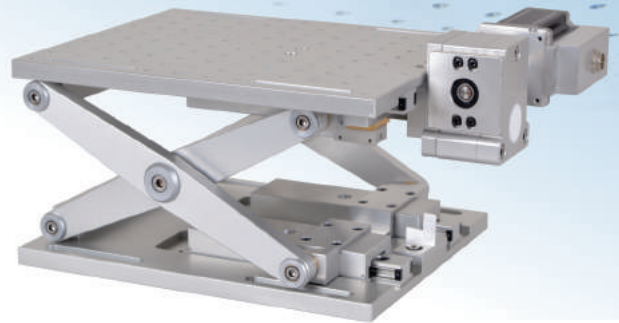
- ▶ Vertical height adjustment by 4mm pitch lead screw with Gear Box
- ▶ Parallelism: 0.1 mm for entire travel
- ▶ Positioning Accuracy : 0.1 mm
- ▶ Load Capacity : 50 to 55 kg
- ▶ Travel Range : 50 mm
- ▶ M6 tapped holes at the top at 25 mm grid.
- ▶ M6 clearance slots at bottom
- ▶ Aluminium Alloy & Stainless Steel Construction

ALUMINIUM BLACK ANODISED FINISH				
Model No:	L (mm)	B (mm)	Height (min, max)	Load Capacity (kg)*
MHDLJ180-100	180	100	150, 215 mm	50
MHDLJ200-200	200	200	160, 225 mm	55
MHDLJ300-250	250	250	200, 300 mm	75
MHDLJ350-300	300	300	225, 325 mm	100

Vacuum Compatible Lab Jacks

Vacuum compatible lab jacks are used in applications where height adjustment is required inside the vacuum environment. The gear ratio is made in 8:1 which ensures smooth movement. The gear materials are made in bronze which itself is lubricating and require very little grease. There is also an option to move the stage manually using a knob provided in the motor. High vacuum grade cables and motors are used in this series.

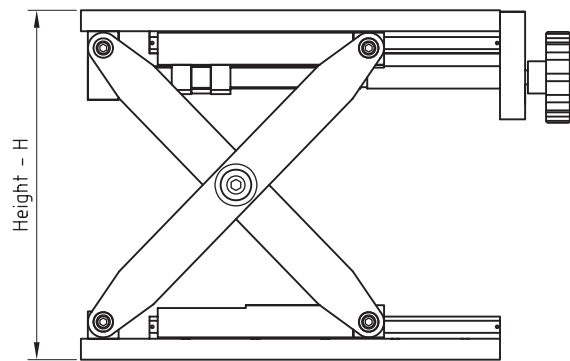
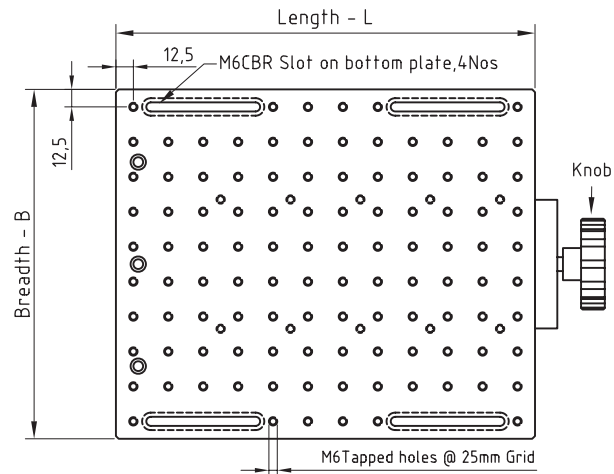
We have provided an option to adopt the vacuum series in manual lab jacks also. To select the required model, please add 'V' on the model while choosing. For eg: For opting vacuum compatibility in the motorized model labjack : MLJ 300-150, the model number will be V-MLJ 300-150 & For opting vacuum compatibility in the manual model labjack : LJSS 300-150, the model number will be V-LJSS 300-150



Controller for Motorized Lab jack

This is a simple controller which provides up and down motion control to the motorized lab jacks. Holding down the up and down key will move the platform up or down correspondingly and releasing the key will stop the movement. The speed can be varied using a control knob provided in the box. The LCD display provided in the control box will show the distance travelling. The Box will be separated from the Lab jack using a cable of length 3 meters. The power input can be 120V or 220V AC depending on your power requirement.

Model : HO-MPC-1HL



Vacuum Compatible Motion Control System

Almost all our mechanical products can be produced as vacuum compatible modification. Please contact us for more information or to speak with a sales engineer.

Anti Vibration Components

Anti vibration components which are exclusively related to the elimination of vibration, energy absorption and protection of optical and electronic components and devices from shocks & vibration are available on request.



• Isolation of vibration
• Reduced noise transmission

Call us at +91 484 2540075 or
send us a mail to mail@holmarc.com or
sales@holmarc.com

RAILS, CARRIERS & ACCESSORIES

Rail with Dovetail design

These rails offer excellent linearity and smooth carrier translation. Rails have linear scale reading in millimeters. M6 slots are provided for fixing it on optical breadboard.

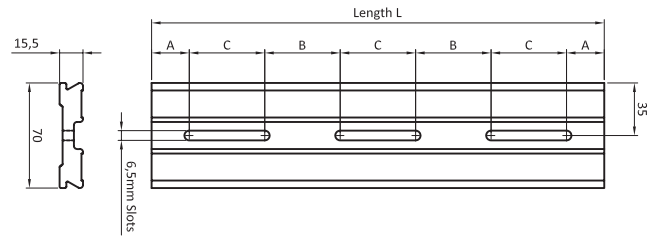
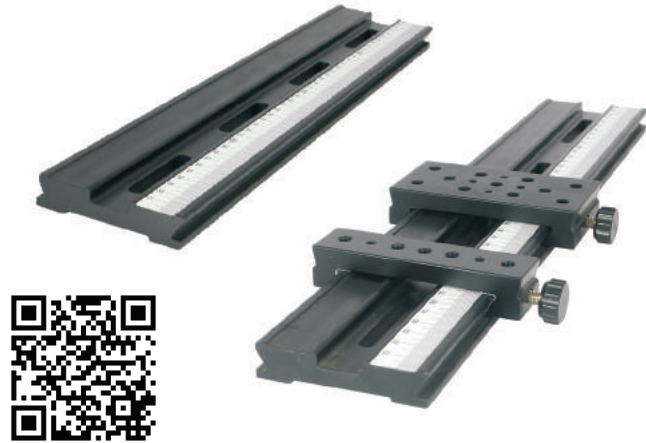
- ▶ 15.5mm thick
- ▶ Aluminium alloy
- ▶ M6 C'bored slots

CUSTOM
CONFIGURABLE



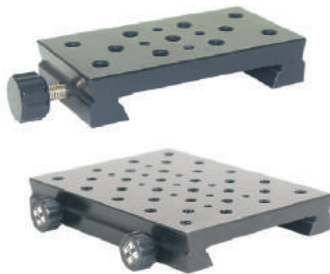
On request, tapped holes other than M6 can be provided.

Model No:	L (mm)	A(mm)	B(mm)	C(mm)
RLDT-300	300	25	50	50
RLDT-350	350	25	75	50
RLDT-400	400	25	50	50
RLDT-450	450	12.5	75	50
RLDT-500	500	12.5	125	75
RLDT-550	550	37.5	125	75
RLDT-600	600	37.5	75	75
RLDT-650	650	25	100	75
RLDT-700	700	50	100	75
RLDT-750	750	37.5	125	75
RLDT-1000	1000	50	200	75

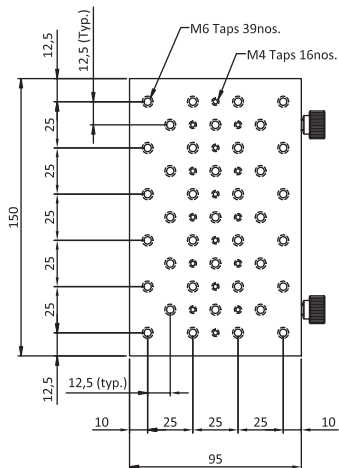
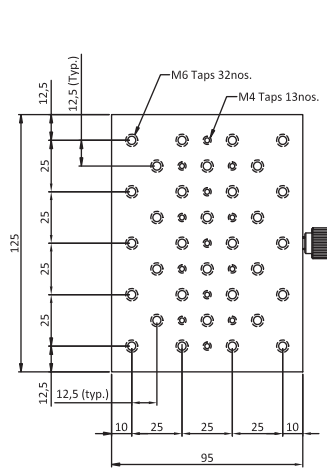
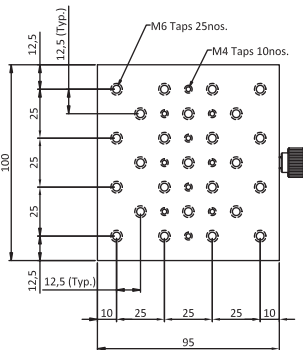
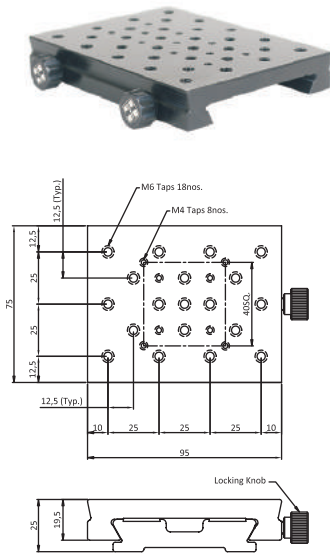
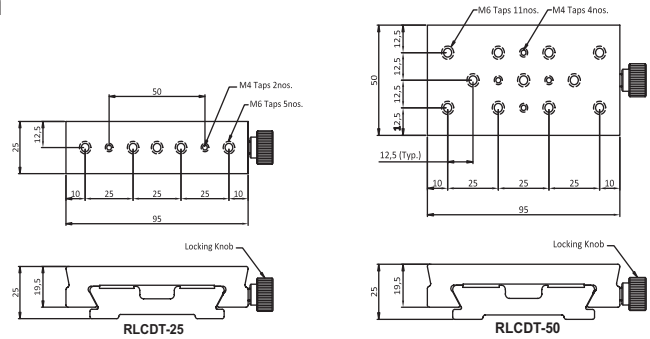


Carrier for Rail with Dovetail design

These carriers are compatible with our rails having dovetail design. They are available in standard width of 95mm and of various lengths ranging from 25 mm to 150 mm. The carriers can be locked anywhere on the rail. Both M6 and M4 tapped holes are provided on it for mounting components.



Model No:	Length (mm)
RLCDT-25	25
RLCDT-50	50
RLCDT-75	75
RLCDT-100	100
RLCDT-125	125
RLCDT-150	150



RLCDT-75

RLCDT-100

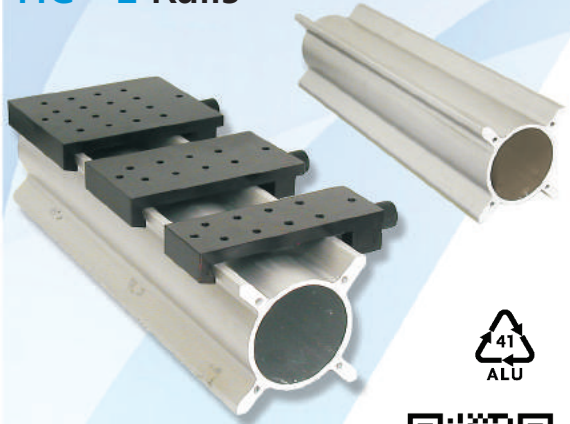
RLCDT-125

RLCDT-150

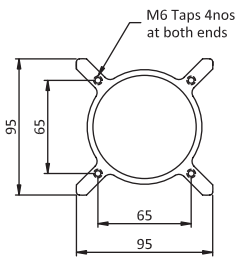
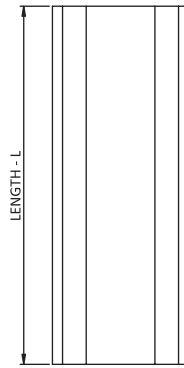


CUSTOM
CONFIGURABLE

HC - 1 Rails



Note: Rails exceeding 2m length are available on request



HC-1 rails are aluminium extrusions having 10mm thick ribs on four sides. They are available in various lengths ranging from 0.5m to 2m. They are rigid in structure and are light weight.

Model No:	Length (mm)
RL-HC1-500	500
RL-HC1-750	750
RL-HC1-1000	1000
RL-HC1-1250	1250
RL-HC1-1500	1500
RL-HC1-2000	2000

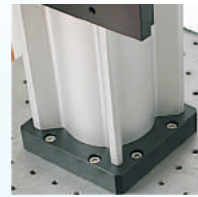
ACCESSORIES for HC1 Rails

Vertical mounting base

Base plate for vertical mounting of the rails.

Model : BP-RLC-HC1-100
Base plate size : 100x100x15mm

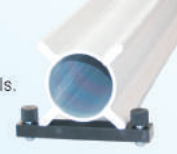
Model : BP-RLC-HC1-175
Base plate size : 165x165x15mm



Base with leveling screws

These bases are used to level the rails.

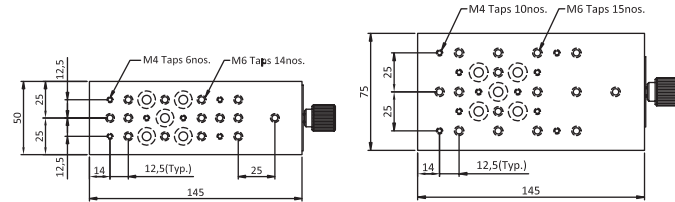
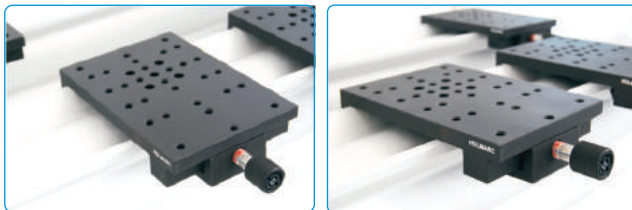
Model : BPL-RLC-HC1



Carrier for HC - 1 Rails

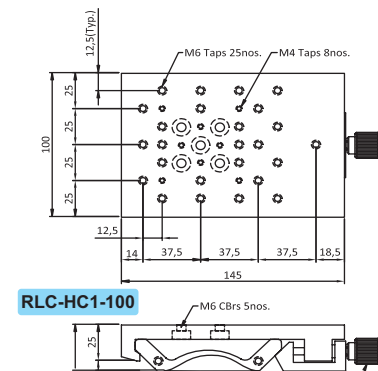
These carriers are compatible with our HC-1 rails. They are available in standard width of 145mm and of various lengths ranging from 50 mm to 150 mm. These carriers can be locked anywhere on the rail. Both M6 and M4 tapped holes are provided on it for mounting components.

Model No:	Length (mm)
RLC-HC1-50	50
RLC-HC1-75	75
RLC-HC1-100	100
RLC-HC1-125	125
RLC-HC1-150	150

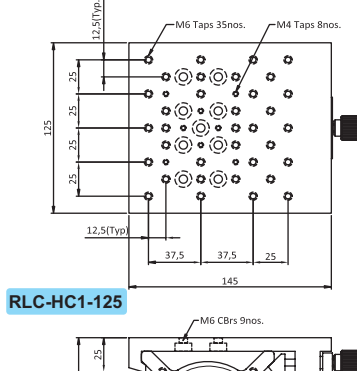


RLC-HC1-50

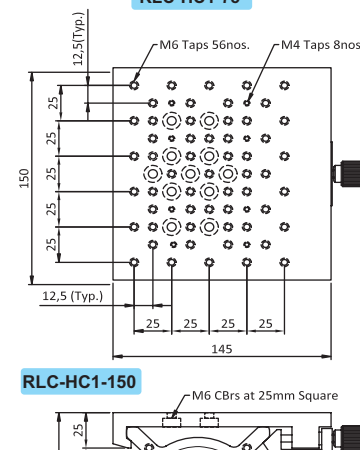
RLC-HC1-75



RLC-HC1-100



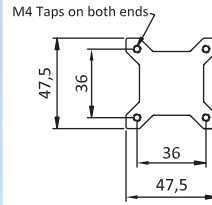
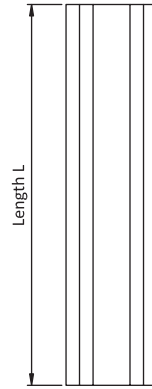
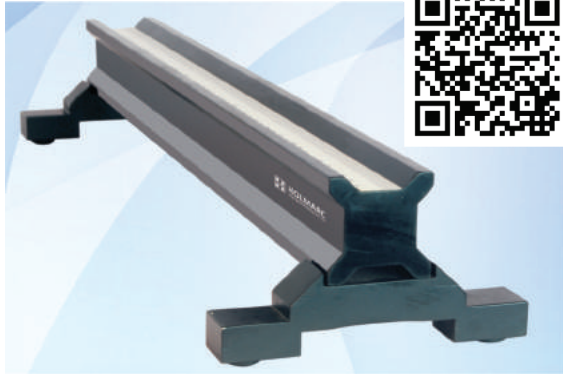
RLC-HC1-125



RLC-HC1-150

HC - 2 Rails

HC2 rail are precision aluminium extruded section having guiding ribs on four corner. The rail have full solid cross section for extra rigidity. A linear scale is fixed on the top with 1mm graduation for quick position references. Specially designed leveling bases are available for the rails as shown in the photographs



Model No:	Length (mm)
RL-HC2-500	500
RL-HC2-750	750
RL-HC2-1000	1000
RL-HC2-1250	1250
RL-HC2-1500	1500
RL-HC2-2000	2000

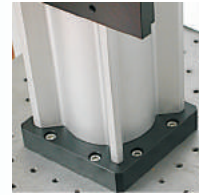
ACCESSORIES for HC2 Rails

Vertical mounting base

Base plate for vertical mounting of the rails.

Model : BP-RLC-HC2-75
Base plate size : 75x75x12mm

Model : BP-RLC-HC2-100
Base plate size : 100x100x12mm



Base with leveling screws

These bases are used to level the rails.

Model : BPL-RLC-HC2



Note: Leveling Base sold separately

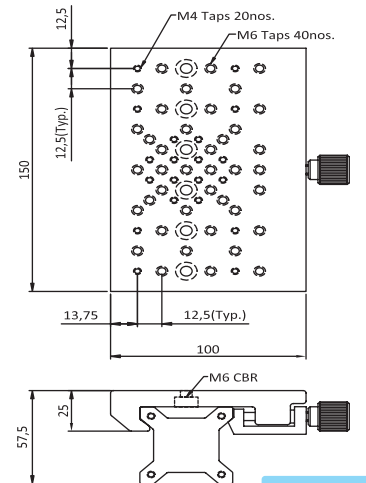
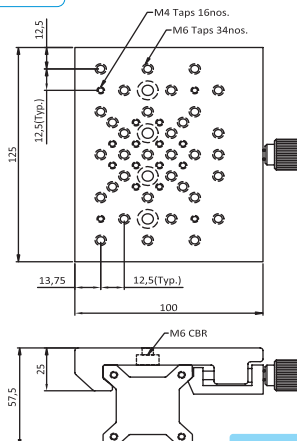
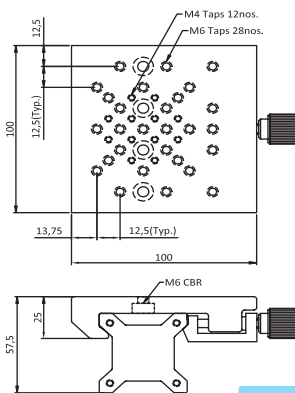
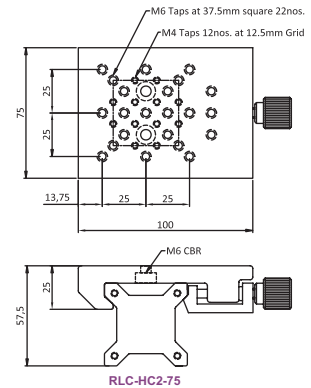
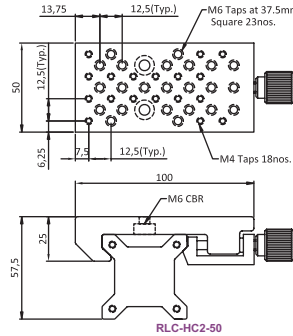
Carrier for HC - 2 Rail

These carriers are compatible with our HC-2 rails. They are available in standard width of 100mm and of various lengths ranging from 50 mm to 150 mm. The carriers can be locked anywhere on the rail. Both M6 and M4 tapped holes are provided on it for mounting components.



- ▶ 10mm thick ribs on four sides
- ▶ Aluminium extrusions
- ▶ Length range starts from 0.5 to 2m

Model No:	Length (mm)
RLC-HC2-50	50
RLC-HC2-75	75
RLC-HC2-100	100
RLC-HC2-125	125
RLC-HC2-150	150

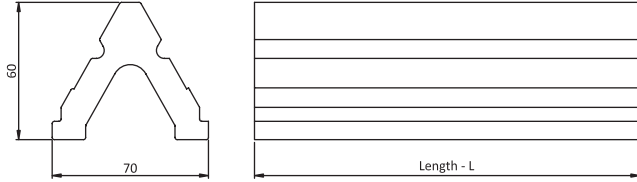


HC - 3 Rails

CUSTOM
CONFIGURABLE



HC-3 rails are triangular shaped aluminium extrusions. They are available in various lengths ranging from 0.5 to 2m. They are rigid in structure and are light weight. Linear scale with 1mm graduation are provided on the side for quick position reference.



Model No:	Length (mm)
RL-HC3-500	500
RL-HC3-750	750
RL-HC3-1000	1000
RL-HC3-1250	1250
RL-HC3-1500	1500
RL-HC3-2000	2000

Carrier for HC - 3 Rails

These carriers are compatible with our HC-3 rails. They are available in three different lengths ranging from 25 mm to 75 mm. The carriers can be locked anywhere on the rail. Both M6 and M4 tapped holes are provided on it for mounting components.



ACCESSORY for HC3 Rails

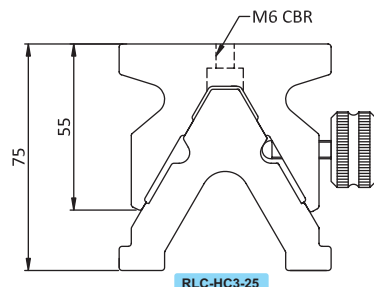
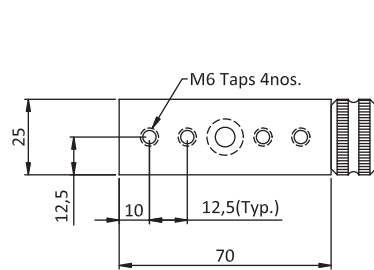
Base with leveling screws

These bases are used to level the rails.

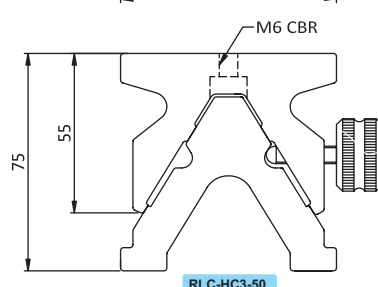
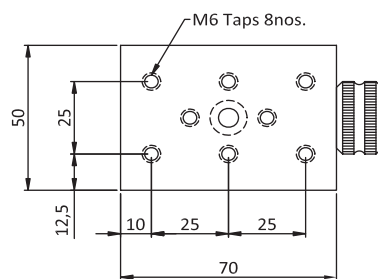
Model : BPL-RLC-HC3



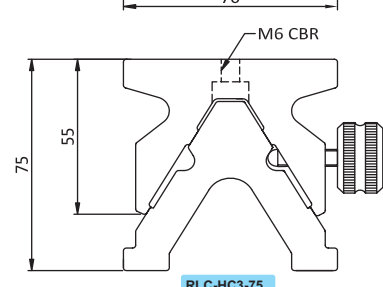
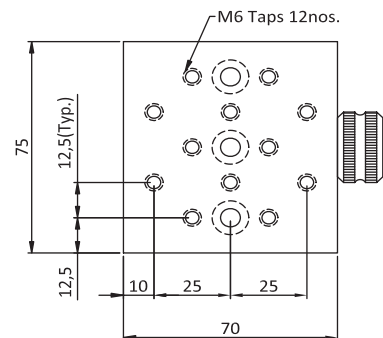
Model No:	Length (mm)
RLC-HC3-25	25
RLC-HC3-50	50
RLC-HC3-75	75



RLC-HC3-25



RLC-HC3-50



RLC-HC3-75

KGC

EMPOWERING FUTURE
THROUGH RESEARCH & INNOVATION

**DESIGN YOUR PERFECT
LABORATORY WITH OUR**

PRODUCT CATALOG

For South East Asia Inquiries:

KGC RESOURCES SDN BHD (223165-D)
No. 2-2-3, Jalan Setia Prima E
U13/E Setia Alam, Seksyen U13
40170, Shah Alam, Selangor
Malaysia

WhatsApp Us at: **+6014 964 9880**
Call Us at: **+603 3341 2880**
Search Us at: **www.kgcscientific.com**
Email Us at: **sales@kgcscientific.com**
or **info.kgc00@gmail.com**

For Indonesia Inquiries:

PT KGC SAINTIFIK
Jalan Kamal Raya (Kompleks Ruko CBD)
Blok A2-07, Cengkareng Timur
Jakarta Barat 11730
Indonesia

WhatsApp Us at: **+62 899 7255 675**
Call Us at: **+62 212 2522 110/+62 212 2522 114**
Search Us at: **www.kgcscientific.com**
Email Us at: **sales@kgcscientific.com**
or **info.kgc09@gmail.com**